

A collaboration by Oneida County Health Department, Mohawk Valley Health System, Rome Memorial Hospital, and HealthConnections Population Health Improvement Program



**ONEIDA COUNTY
COMMUNITY
HEALTH
ASSESSMENT**

**STAKEHOLDER
CONFERENCE**

Welcome!

1

- Sign in to WiFi Network: **135 Clinton street**
- Password: **passport**

2

- Visit **Slido.com**

3

- Enter code **#OC19**

Introductions

- ACR Health
- Boilermaker Road Race
- BRiDGES
- Center for Family Life and Recovery
- CNYHHN, Inc.
- Cornell Cooperative Ext.
- Empowered Pathways
- Excellus BCBS
- HealtheConnections
- Herkimer-Oneida Counties Comprehensive Planning Program
- Hospice & Palliative Care
- Insight House
- Kids Oneida
- Mid York Library System

- Mohawk Valley Health System (MVHS)
- Mohawk Valley Housing & Homeless Coalition
- Mohawk Valley Perinatal Network
- Mohawk Valley Resource Center for Refugees
- MVCAA
- MVP Healthcare
- MV Psychiatric Center
- Nascentia Health
- Neighborhood Center
- OC DSS/Medicaid
- OC Health Dept.

- OC Mental Health Dept.
- OC Office for the Aging
- OC Public Market
- OC Workforce Dev.
- Parkway Center
- Planned Parenthood
- RCIL
- Regional Primary Care Network
- Rescue Mission of Utica
- Rome Memorial Hospital
- The House of the Good Shepherd
- United Way
- Upstate Family Health Center
- WIC
- YMCA Greater Tri-Valley

Goals of Today's Meeting

Engage
stakeholders in
Prevention Agenda
planning

Gather feedback
and insights on
health issues

Inform the Oneida
County Community
Health Assessment

Plan for Today

Background

Health data

Discuss & prioritize

Social determinants

Discuss & report out

BREAK

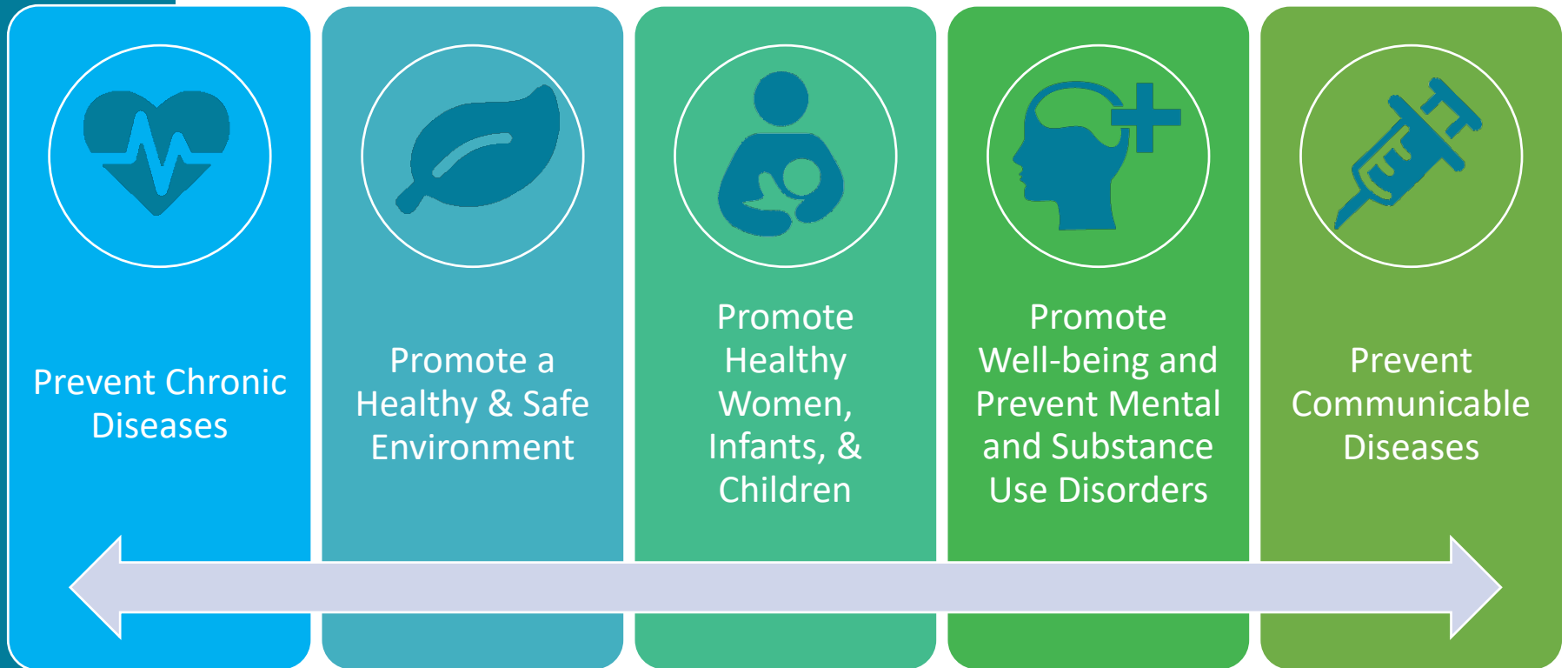
Background on the NYS Prevention Agenda

NYS Prevention Agenda

- Statewide initiative
- Plan for improving health and reducing health disparities



NYS Prevention Agenda 2019-2024



NYS Prevention Agenda 2019-2024

NEW FOCUS

SOCIAL DETERMINANTS OF HEALTH

The social determinants of health are the conditions in which we are born, we grow and age, and in which we live and work. The factors below impact on our health and wellbeing.



Childhood experiences



Housing



Education



Social support



Family income



Employment



Our communities



Access to health services

Source: NHS Health Scotland

NYS Prevention Agenda 2019-2024

NEW FOCUS

Health Across All Policies

Age-Friendly NYS



NYS Prevention Agenda 2019 Timeline

This
meeting

Submit final
2019-2021
CHA & CHIP

Mar

April

May

June

July

Aug

Sept

Oct

Nov

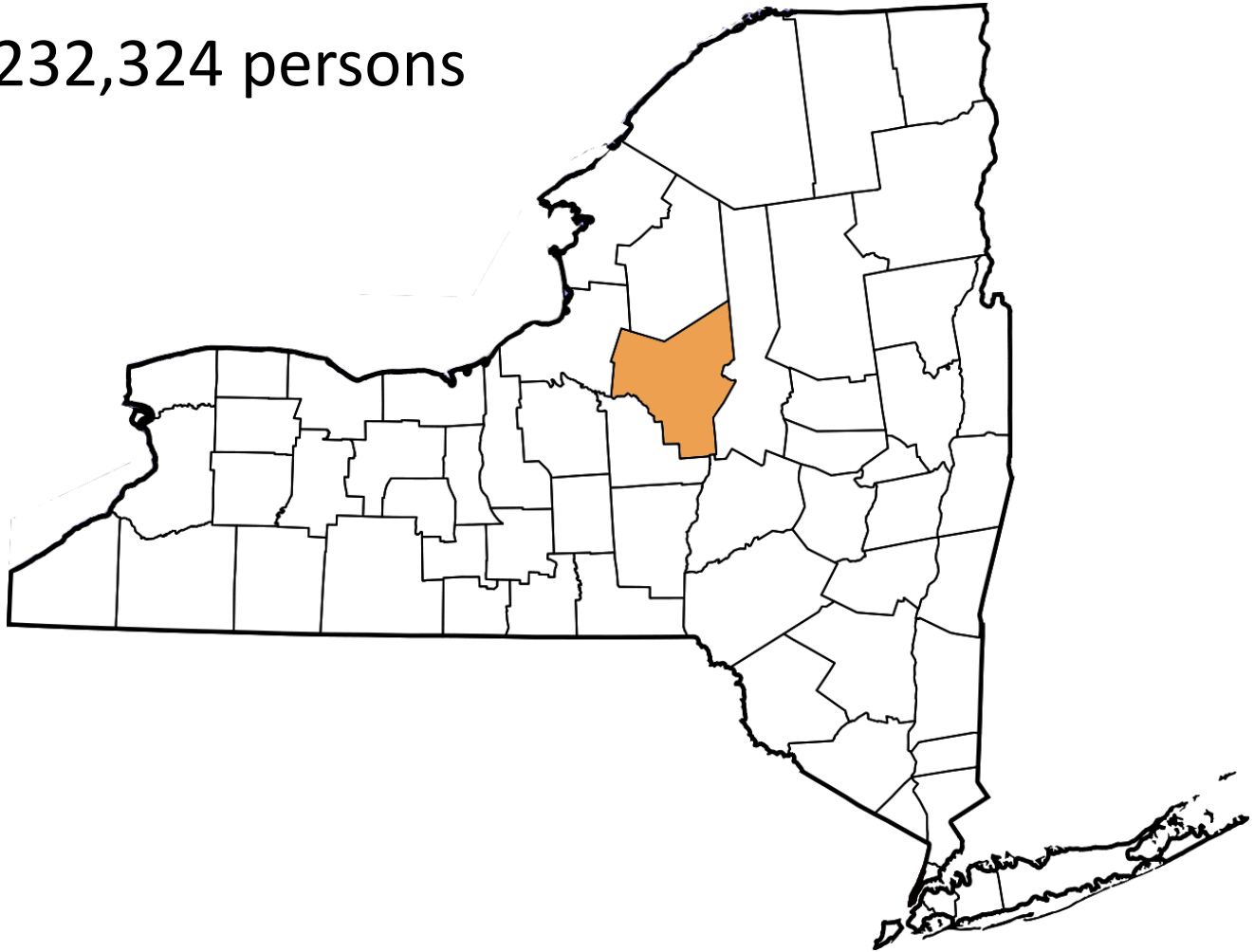
Dec

Draft 2019-2021
Community Health
Assessment (CHA) and
Community Health
Improvement Plan (CHIP)

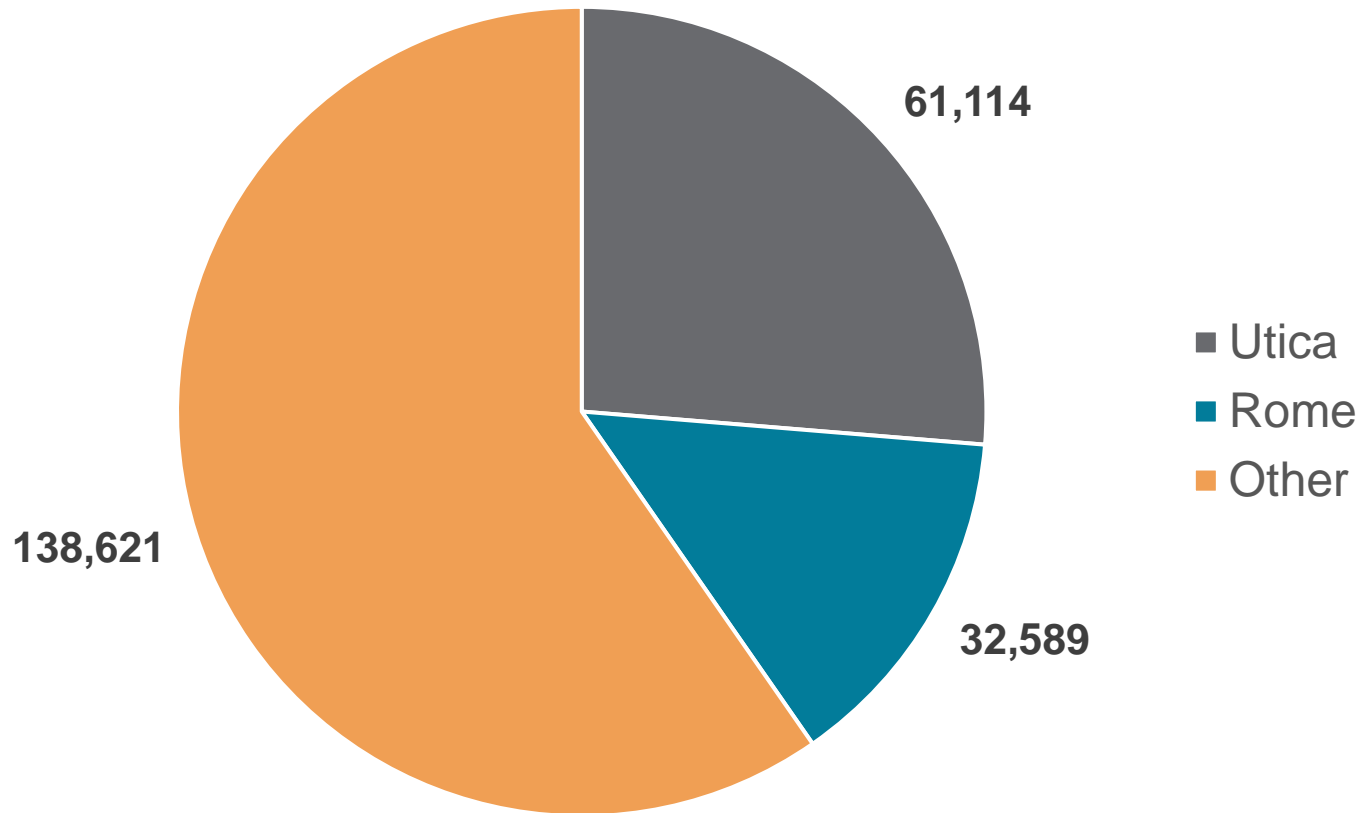
The Basics:
Oneida County
Demographics

Oneida County Population

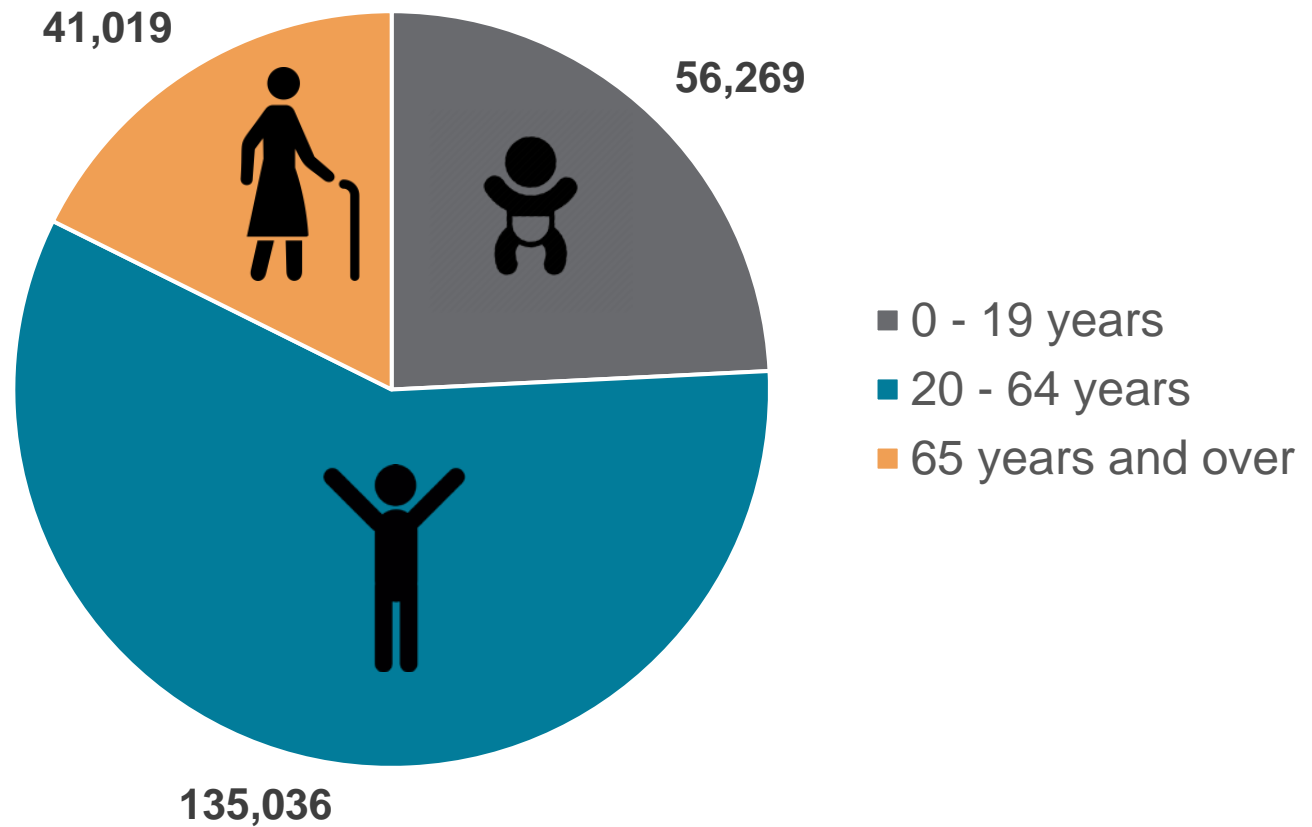
- 232,324 persons



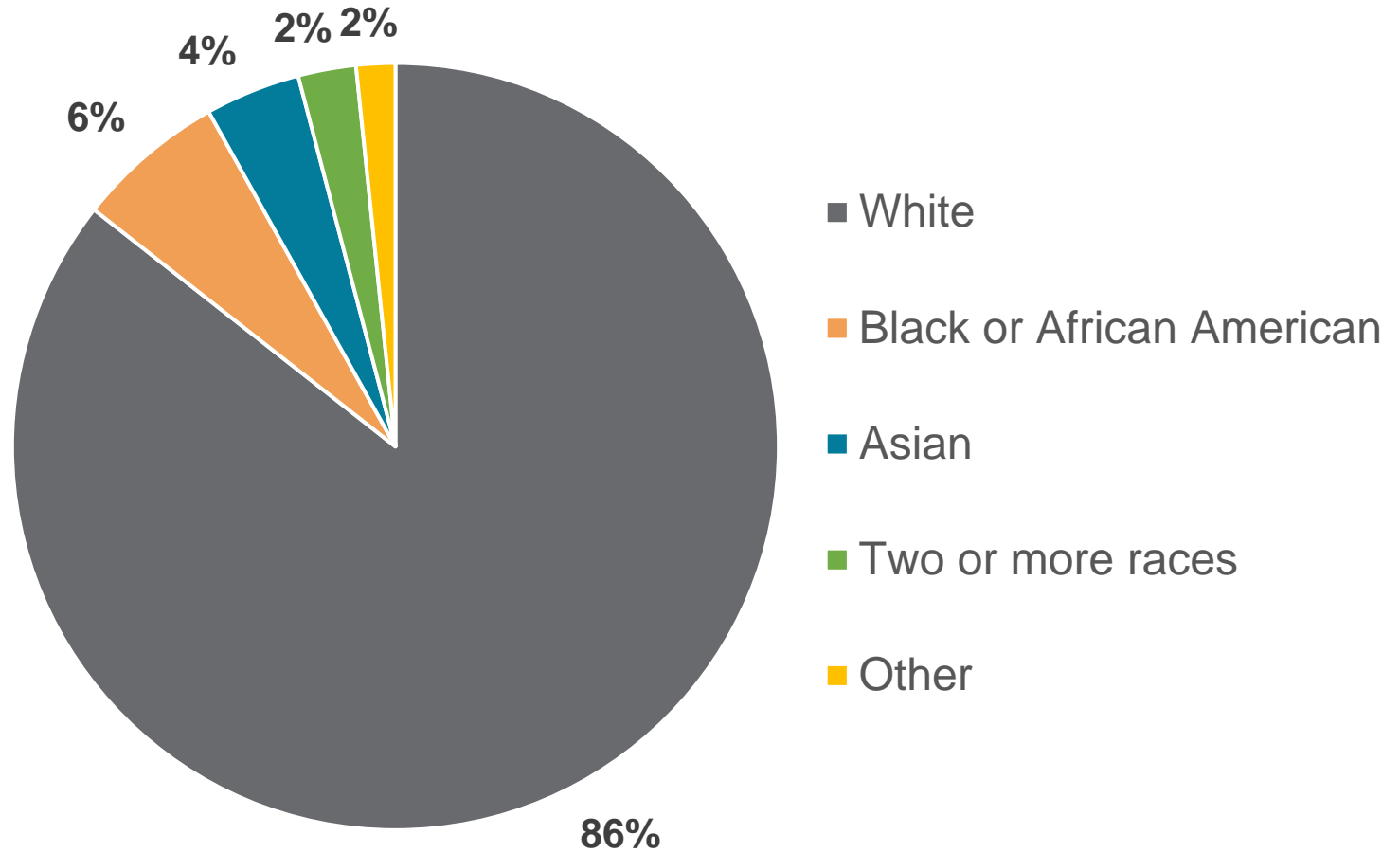
Oneida County Population by location



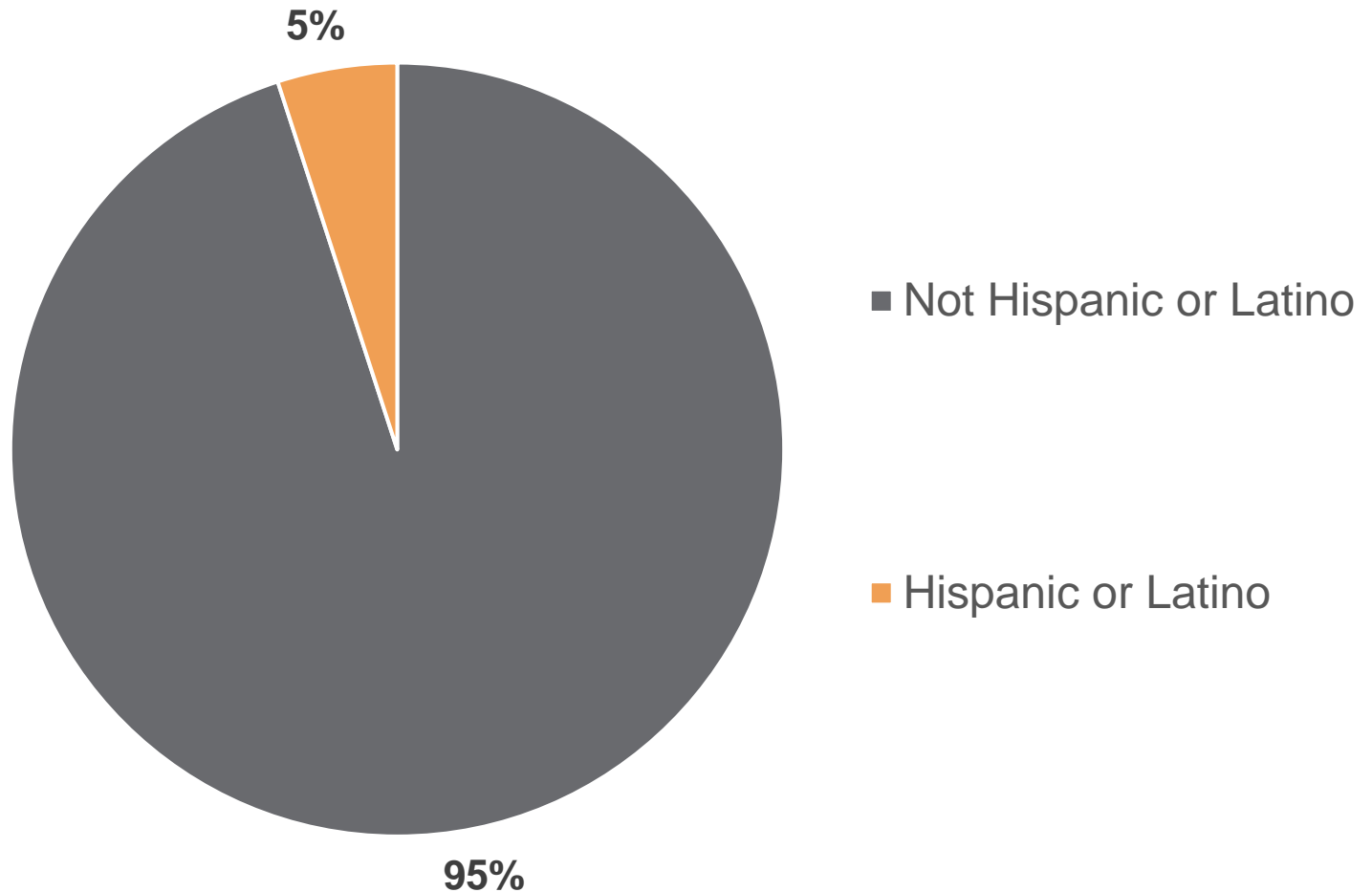
Oneida County Population by Age Group



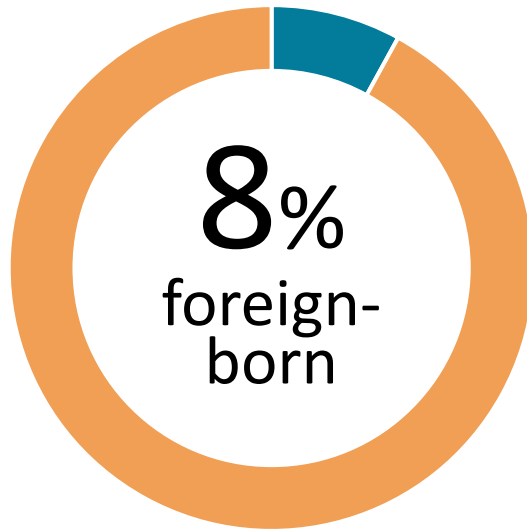
Oneida County Population by Race



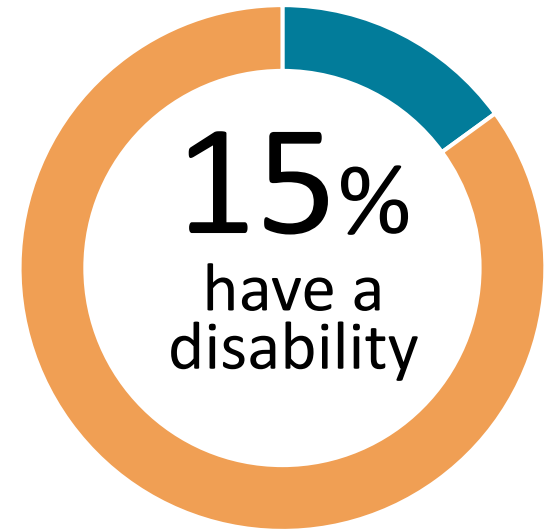
Oneida County Population by Ethnicity



Oneida County Population



- Bosnians
- Vietnamese
- Russians
- Burmese
- Somali Bantu
- & more



- Ambulatory
- Independent living
- Cognitive
- Hearing
- Self-care
- Vision

Introducing a new tool:

Slido!

Instructions

1

- Sign in to WiFi Network: **135 Clinton street**
- Password: **passport**

2

- Visit **Slido.com**

3

- Enter code **#OC19**

Question:

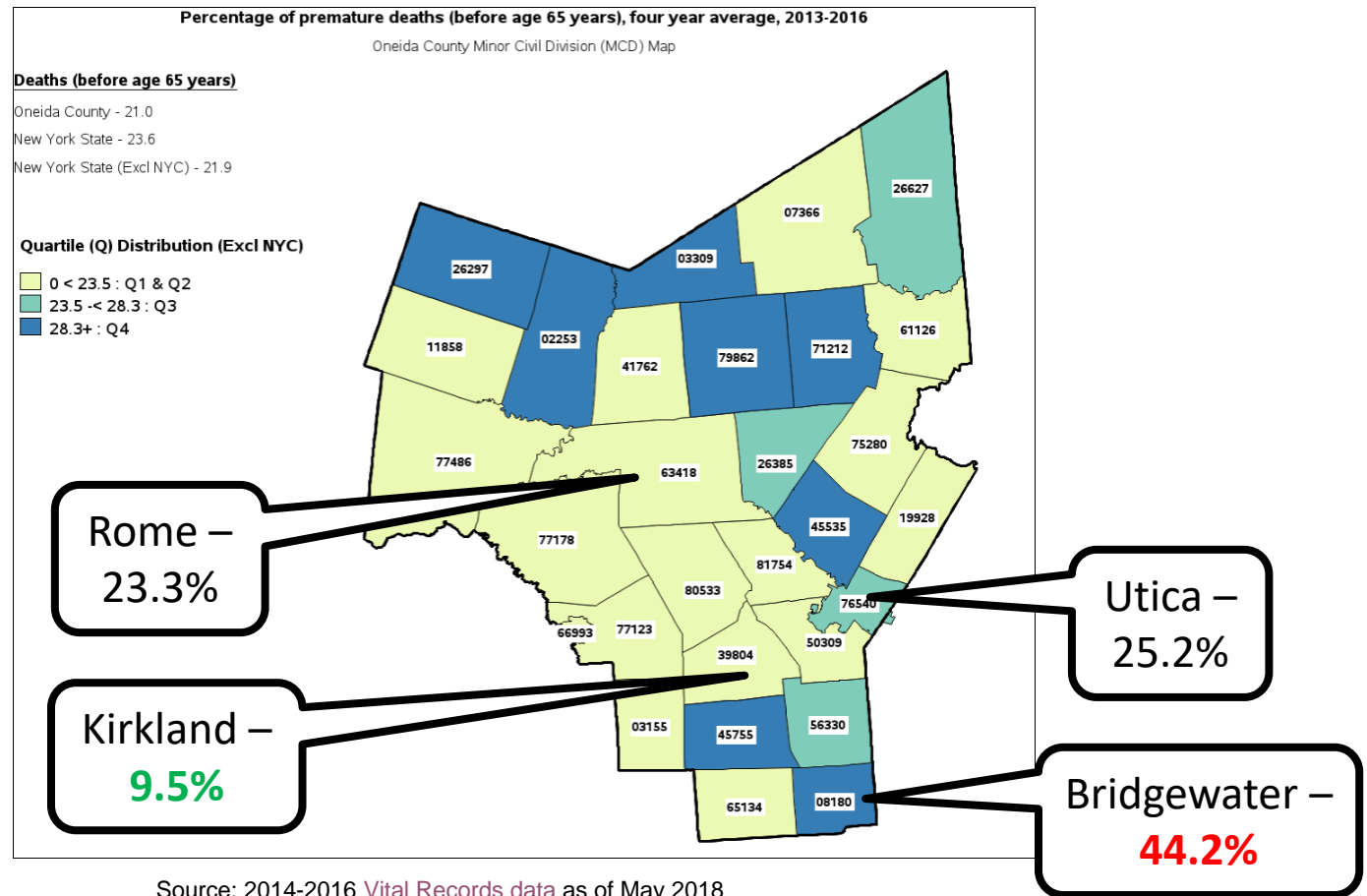
What are your perceptions on the top health issues in Oneida County?

Type 1-3 issues in the Questions area on Slido.com

Oneida County Health Data

Premature Death

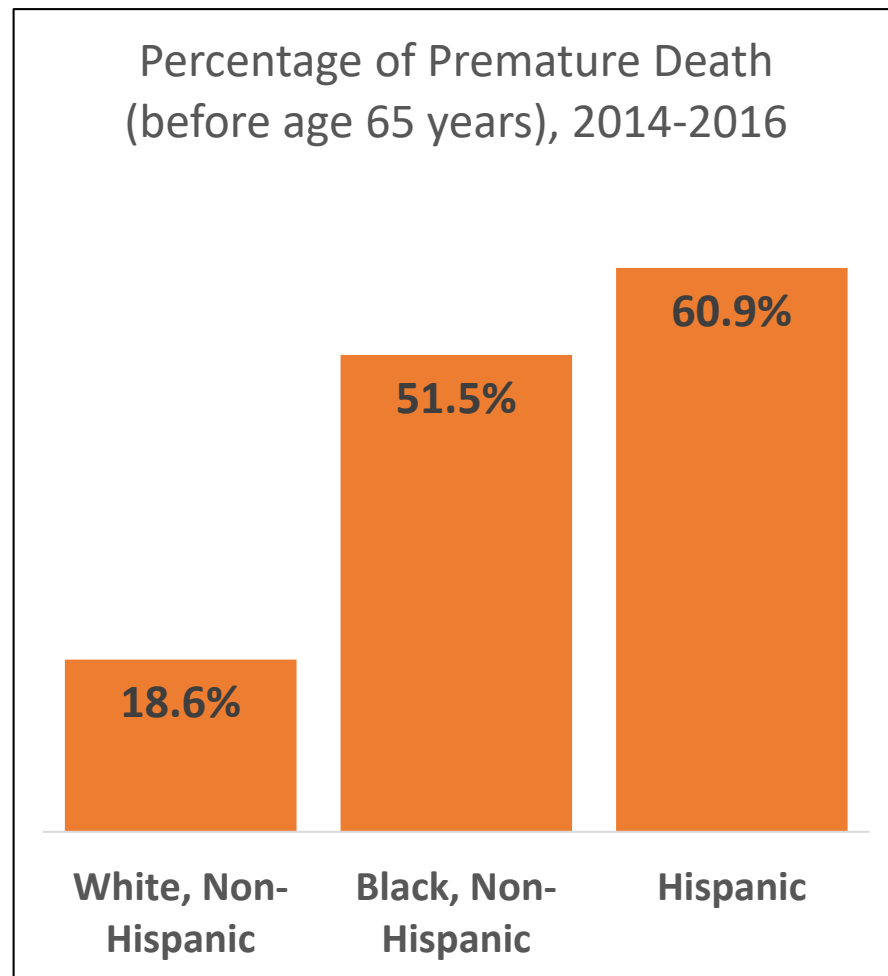
- 21.5% of Oneida County residents die prematurely (before age 65)



Premature Death: Disparities

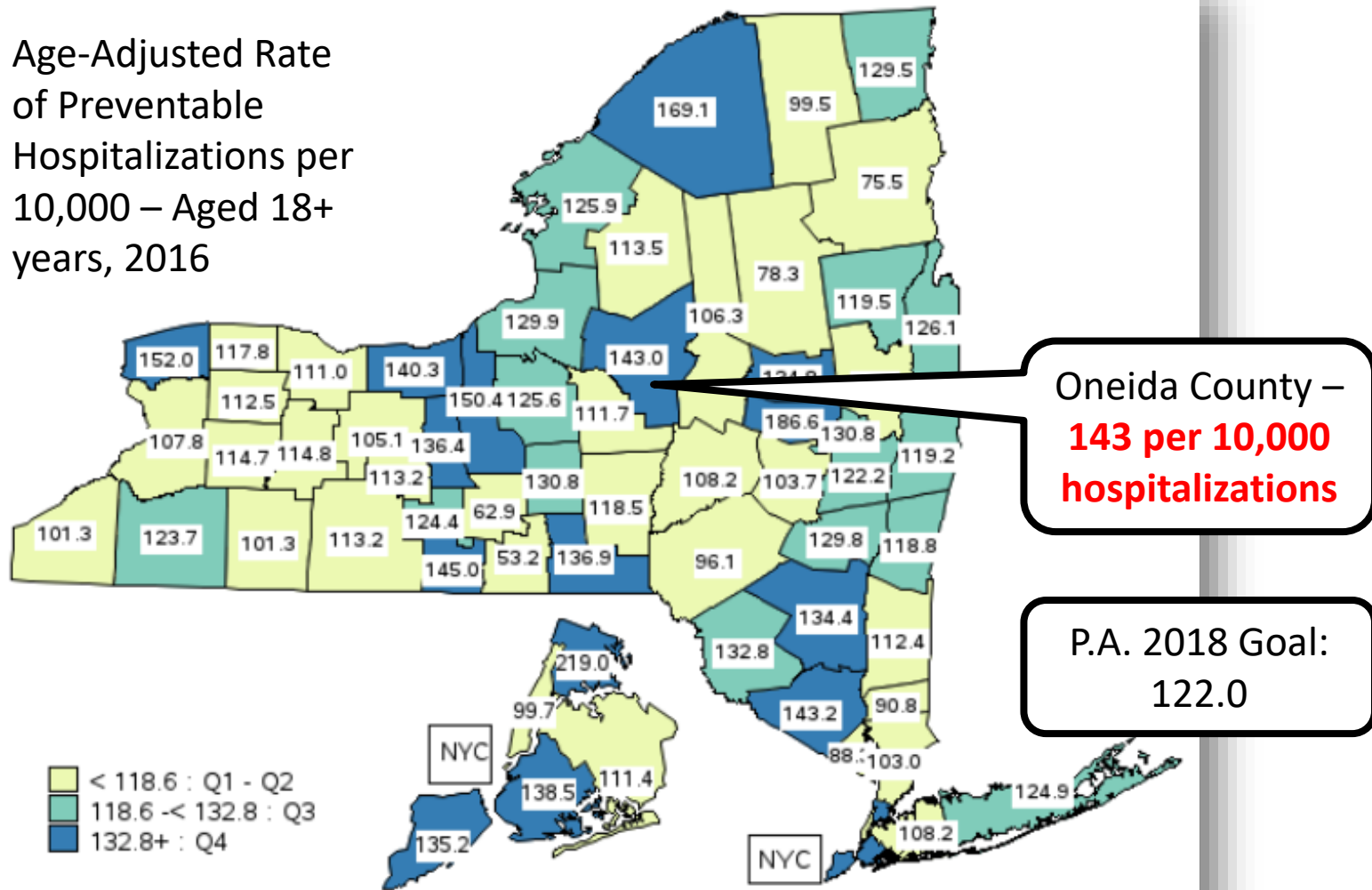
Ratio of

- Black non-Hispanics to White non-Hispanics is **2.77:1**
- Hispanics to White non-Hispanics is **3.27:1**



Preventable Hospitalizations

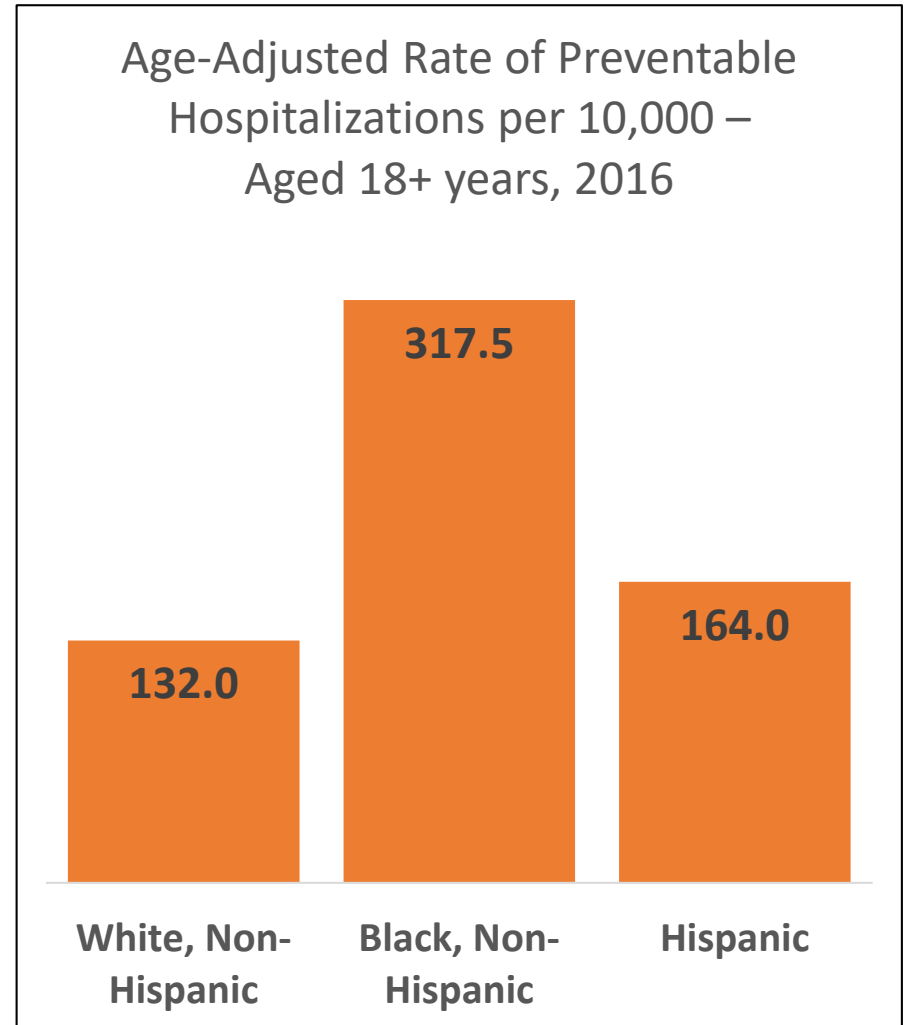
Age-Adjusted Rate of Preventable Hospitalizations per 10,000 – Aged 18+ years, 2016



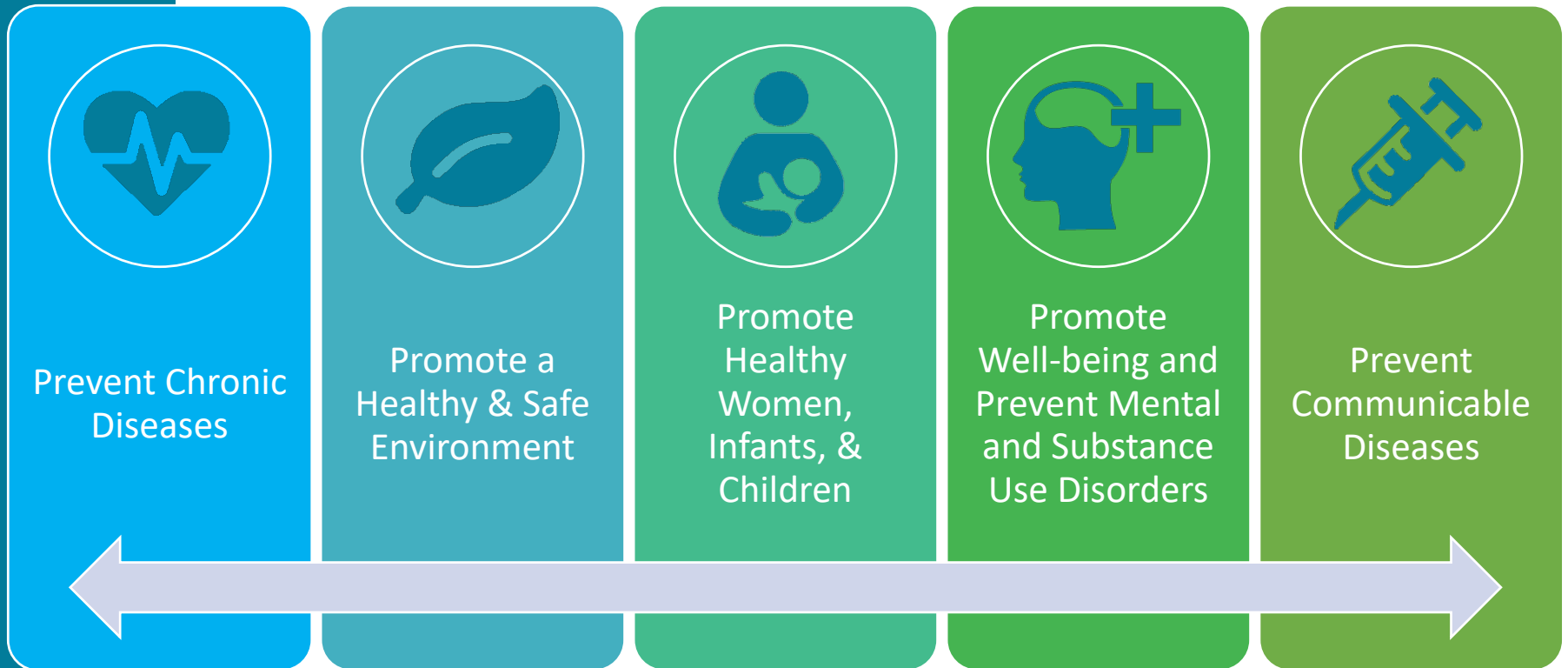
Preventable Hospitalizations: Disparities

Ratio of

- Black non-Hispanics to White non-Hispanics is **2.41:1**
- Hispanics to White non-Hispanics is **1.24:1**



NYS Prevention Agenda 2019-2024





Prevent Chronic Diseases

1. Healthy Eating & Food Security

2. Physical Activity

3. Tobacco Prevention

4. Preventive Care & Management

Obesity

Cancer

Heart Disease

Hypertension

Diabetes

Asthma

Arthritis

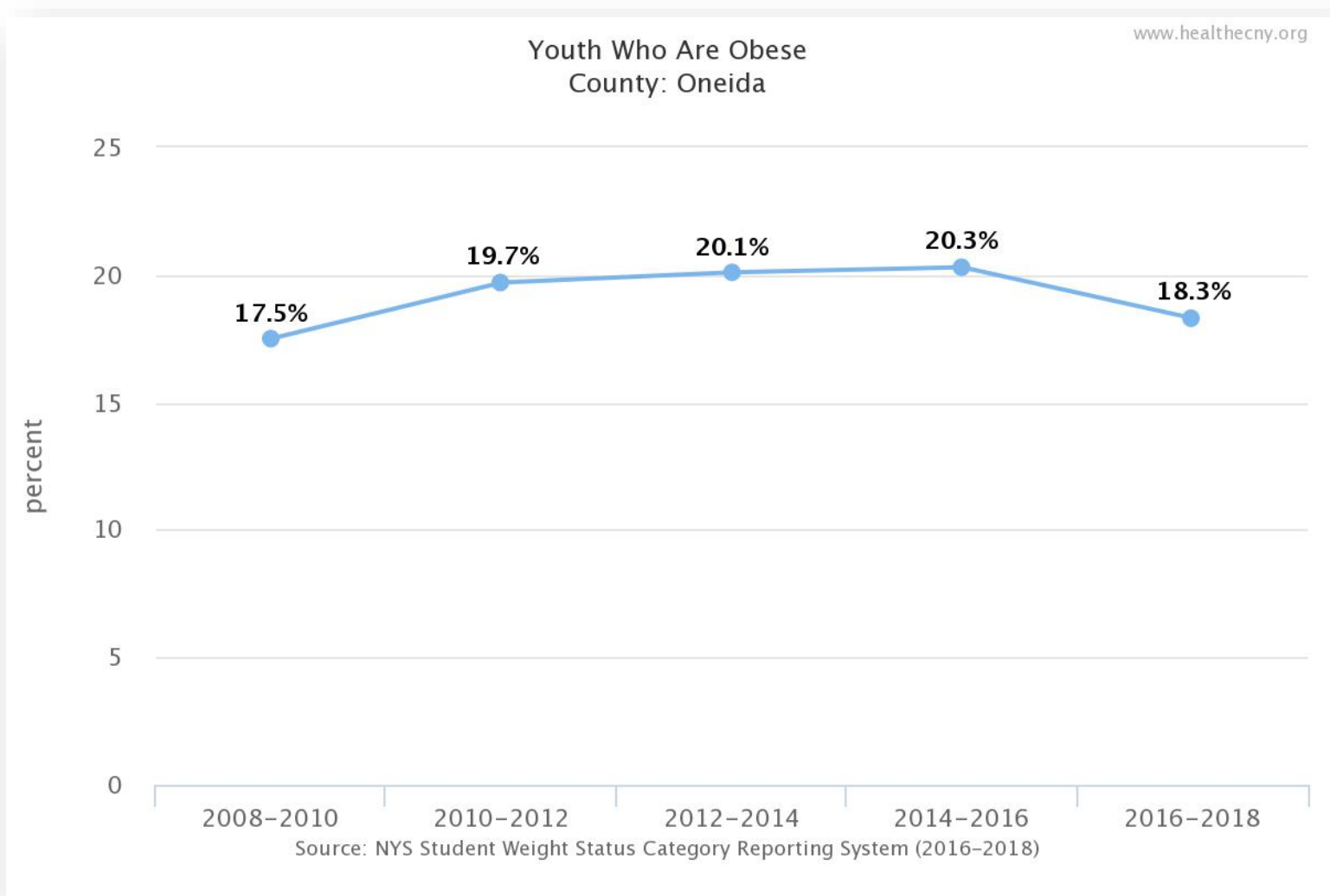
Kidney disease

Leading Causes of All Deaths for Total Population Selected Counties: Oneida

Top 6 Causes ▼

		Number of deaths and age-adjusted death rate						
		Total Deaths	#1 Cause of Death	#2 Cause of Death	#3 Cause of Death	#4 Cause of Death	#5 Cause of Death	#6 Cause of Death
Oneida	2015	Total Deaths 2,615 780.9 per 100,000	Heart Disease 756 212.9 per 100,000	Cancer 551 171.3 per 100,000	CLRD 162 47.2 per 100,000	Unintentional Injury 110 42.3 per 100,000	Stroke 107 29.7 per 100,000	Diabetes 65 19.8 per 100,000
	2014	Total Deaths 2,451 745.4 per 100,000	Heart Disease 694 200.4 per 100,000	Cancer 492 155.1 per 100,000	CLRD 129 38.3 per 100,000	Stroke 111 31.9 per 100,000	Unintentional Injury 105 40.3 per 100,000	Diabetes 75 23.4 per 100,000
	2013	Total Deaths 2,440 733.3 per 100,000	Heart Disease 640 178.5 per 100,000	Cancer 552 173.3 per 100,000	CLRD 134 39.8 per 100,000	Stroke 111 31.2 per 100,000	Unintentional Injury 104 37.3 per 100,000	Diabetes 71 22.6 per 100,000
	2012	Total Deaths 2,509 756.0 per 100,000	Heart Disease 732 208.0 per 100,000	Cancer 542 173.4 per 100,000	CLRD 138 41.5 per 100,000	Stroke 131 36.9 per 100,000	Alzheimer's Disease 87 21.9 per 100,000	Unintentional Injury 70 24.4 per 100,000
	2011							

Obesity - Youth

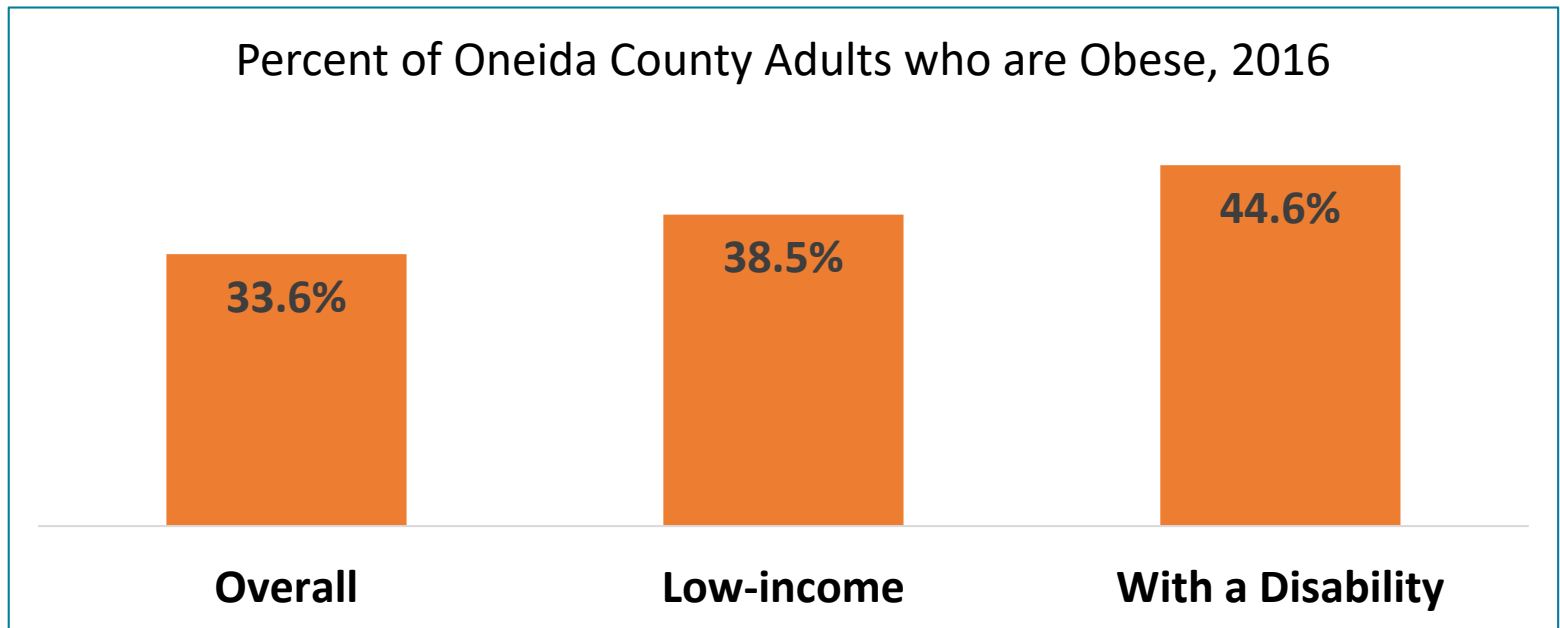


Obesity

- 1 in 3 adults are obese



Percent of Oneida County Adults who are Obese, 2016



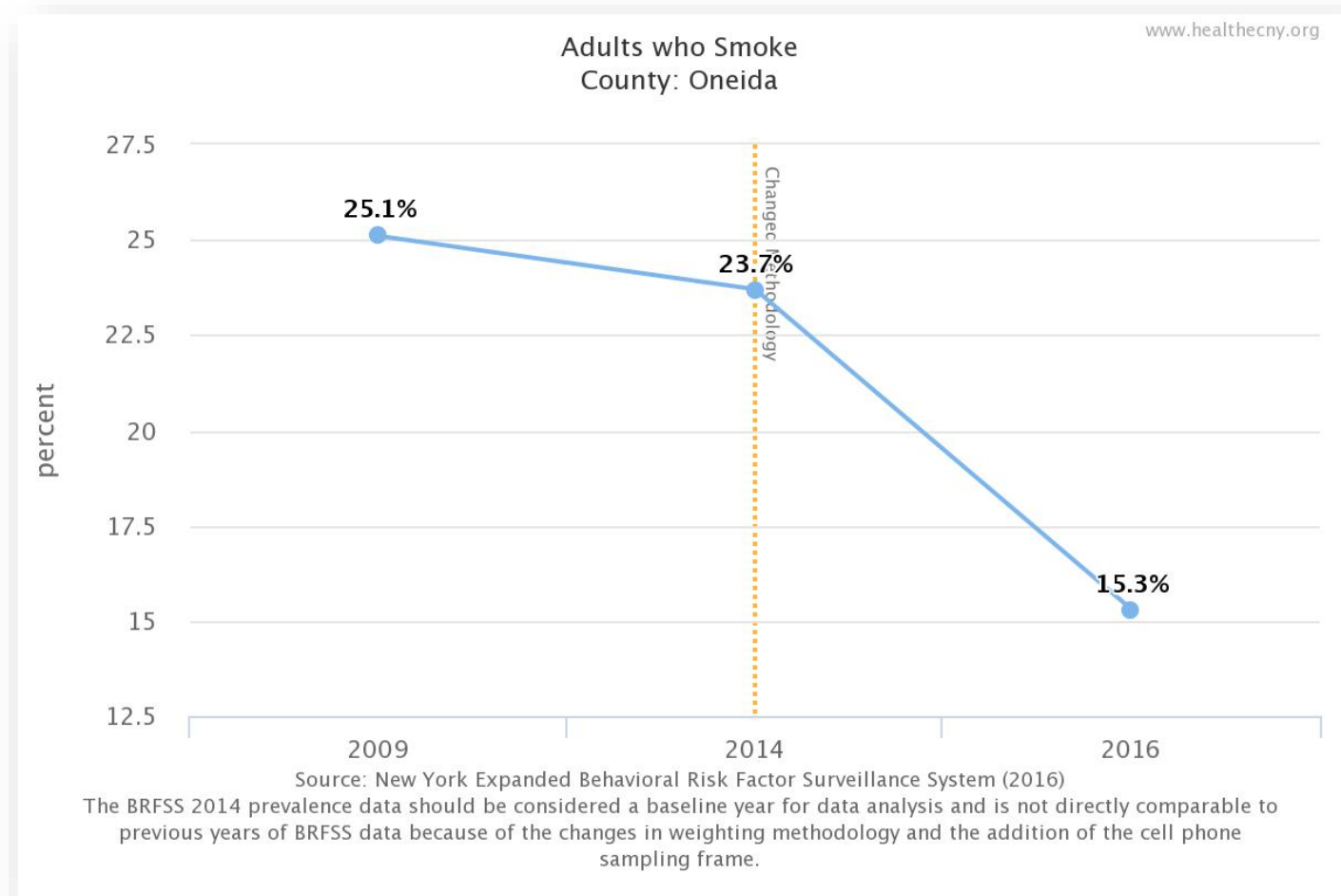
Obesity

- 77% of adults have perceived food security
 - Approximately 23% do not
- 26% of adults consume sugar-sweetened beverages daily
- 29% of adults do not participate in any leisure-time physical activity



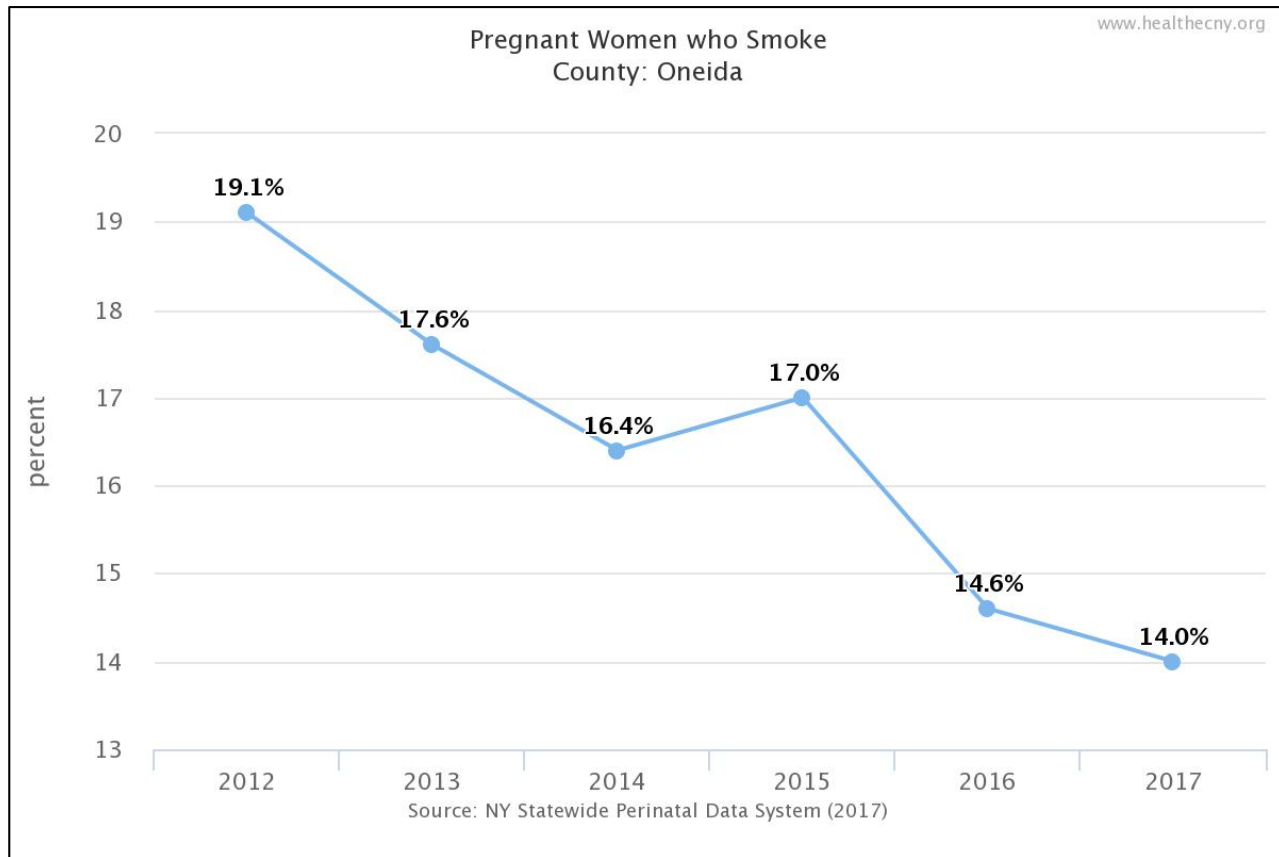
Tobacco Use

- 15% of adults smoke

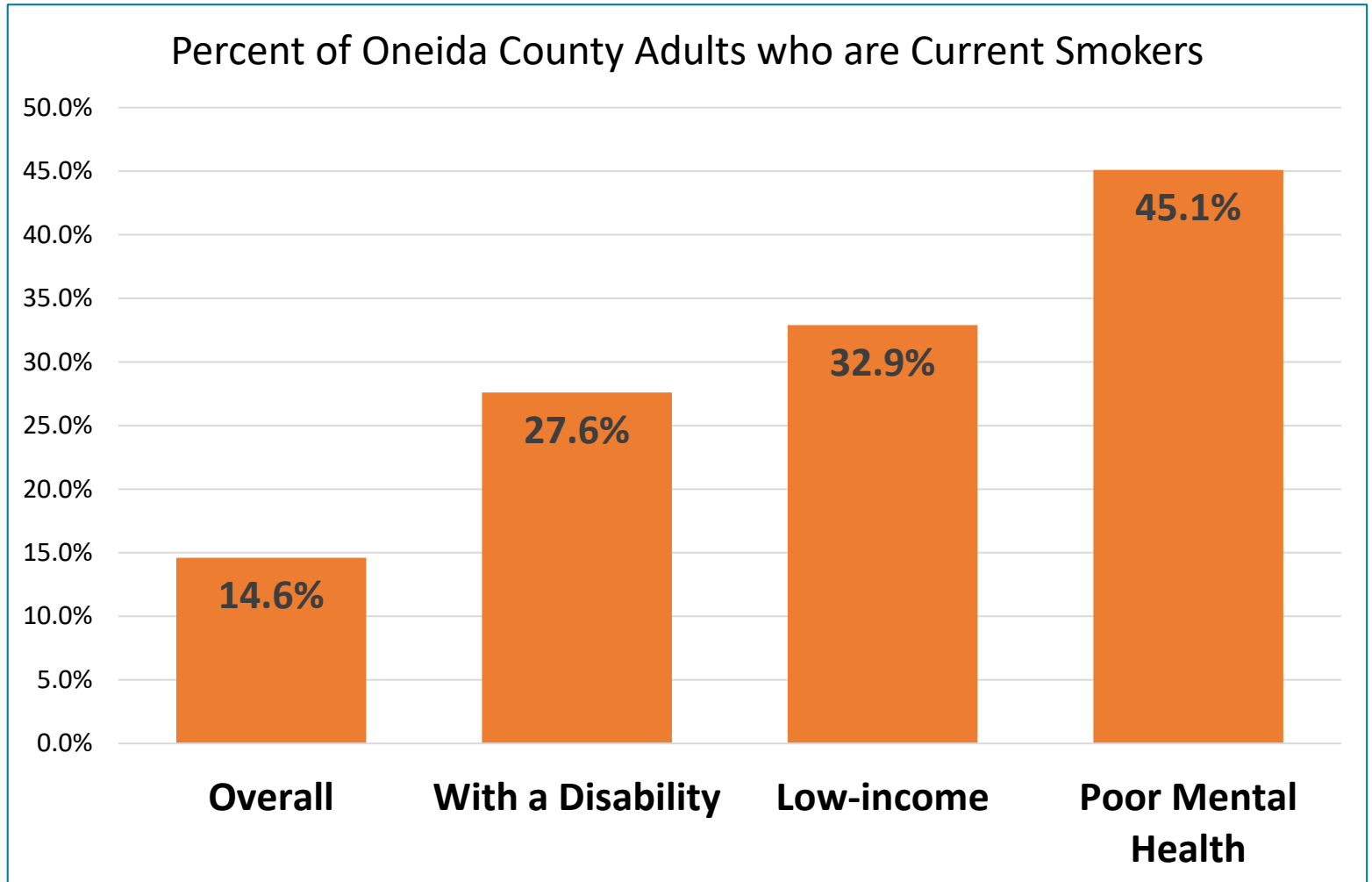


Tobacco Use

- 14% of pregnant women smoke



Tobacco Use



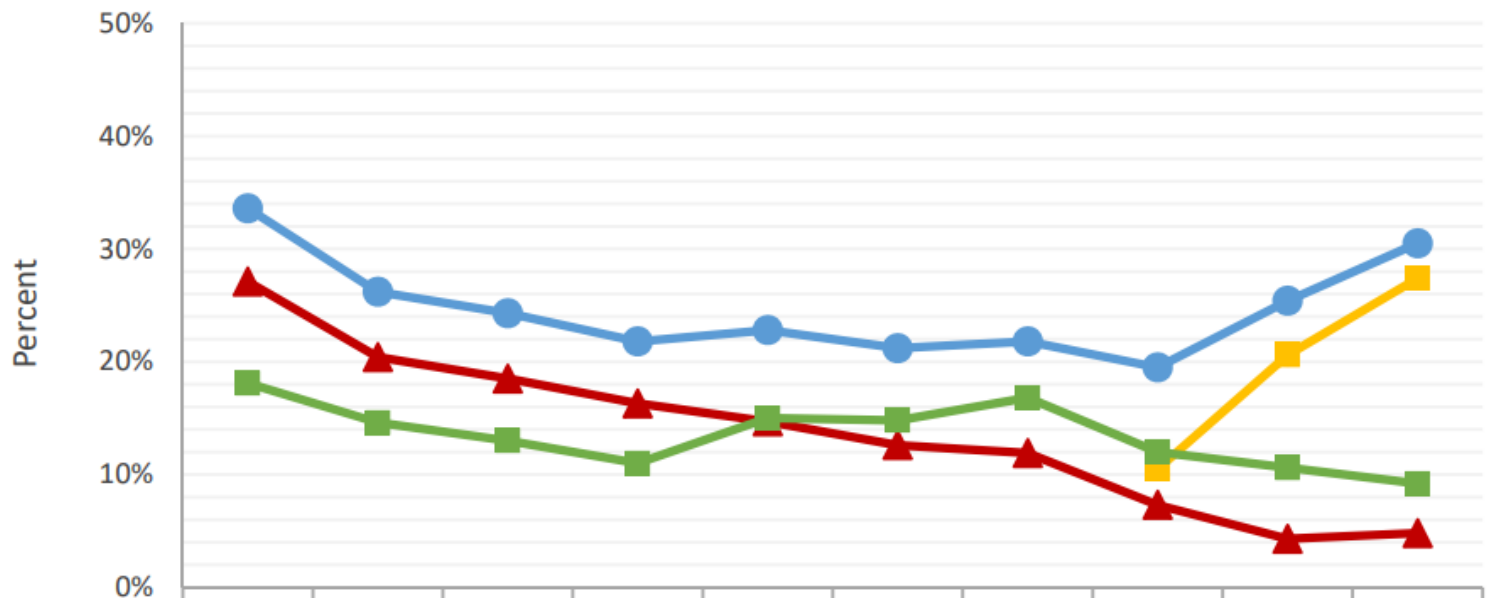
Tobacco Use

- From NY State data, we know rates are higher among people who:
 - Are High school **Non-graduates**
 - Are **low-income**
 - Are **unemployed**
 - Have **Medicaid** insurance
 - Have **poor mental health**
 - Identify as **LGBT**
 - Have **disabilities**



Tobacco Use

Trends in Any Tobacco Product Use among High School Students³ in NYS, 2000-2018



	2000	2002	2004	2006	2008	2010	2012	2014	2016	2018
Any Tobacco Products ²	33.6%	26.2%	24.3%	21.8%	22.8%	21.2%	21.8%	19.5%	25.4%	30.5%
Cigarettes	27.1%	20.4%	18.5%	16.3%	14.7%	12.6%	11.9%	7.3%	4.3%	4.8%
E-Cigarettes	n/a	n/a	n/a	n/a	n/a	n/a	n/a	10.5%	20.6%	27.4%
Other Tobacco Products	18.1%	14.6%	13.0%	11.0%	15.0%	14.8%	16.8%	12.0%	10.6%	9.2%

Screenings



- **76%** of adults aged 50-75 receive recommended colorectal cancer screenings



- **88%** of women aged 50-74 receive recommended breast cancer screenings

ER and Hospitalization Rates

Age-Adjusted ER Rate due to Uncontrolled Diabetes

4.3

ER visits per 10,000
population 18+ years
(2014-2016)



NY Counties

Compared to:



NY Value
(3.3)

[Learn More](#) [Save Card](#)

Age-Adjusted Hospitalization Rate due to Uncontrolled Diabetes

1.5

Hospitalizations per
10,000 population 18+
years
(2014-2016)



NY Counties

Compared to:



NY Value
(1.9)

[Learn More](#) [Save Card](#)

Age-Adjusted ER Rate due to Asthma

34.6

ER visits per 10,000
population
(2014-2016)



NY Counties

Compared to:



NY Value
(68.6)

[Learn More](#) [Save Card](#)

Age-Adjusted Hospitalization Rate due to Asthma

7.1

Hospitalizations per
10,000 population
(2014-2016)



NY Counties

Compared to:

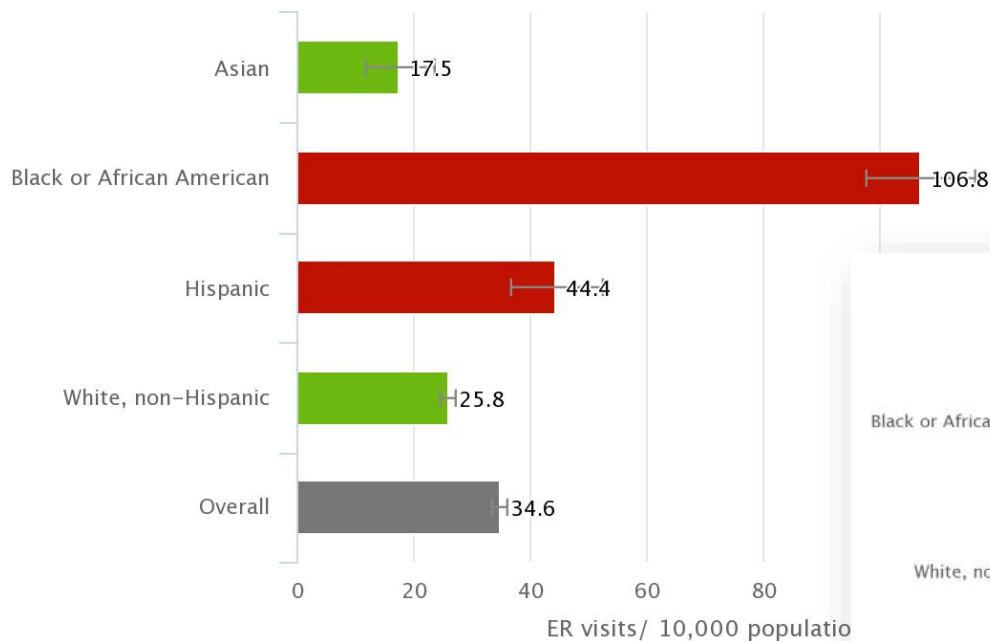


NY Value
(13.6)

[Learn More](#) [Save Card](#)

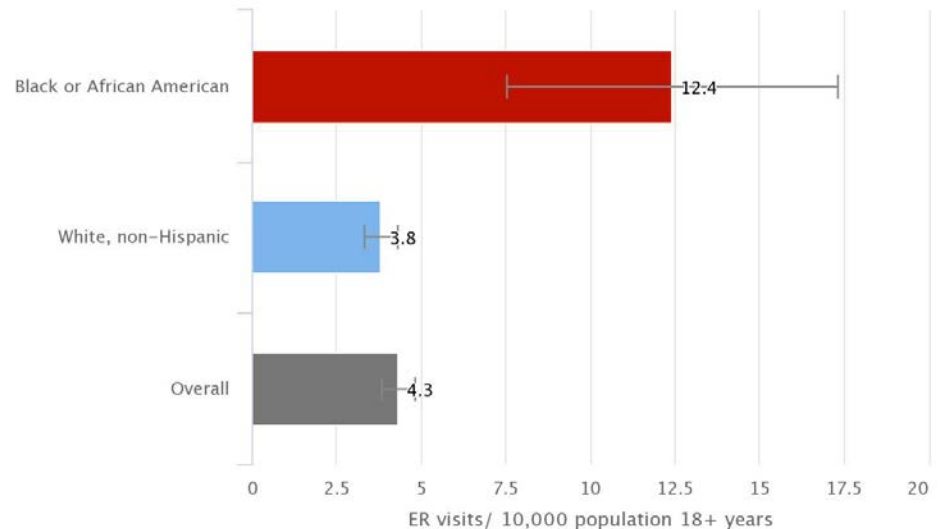
ER and Hospitalization Rates: Disparities

Age-Adjusted ER Rate due to Asthma by Race/Ethnicity
County: Oneida



Source: New York Statewide Planning and Research Cooperative System (SPARCS)

Age-Adjusted ER Rate due to Uncontrolled Diabetes by Race/Ethnicity
County: Oneida



Source: New York Statewide Planning and Research Cooperative System (SPARCS) (2014-2016) www.healthcny.org



Promote a Healthy & Safe Environment

1. Injuries, Violence, & Occupational Health

2. Outdoor Air Quality

3. Built & Indoor Environments

4. Water Quality

5. Food & Consumer Products

Falls

Homicide

Assault

Occupational Injury

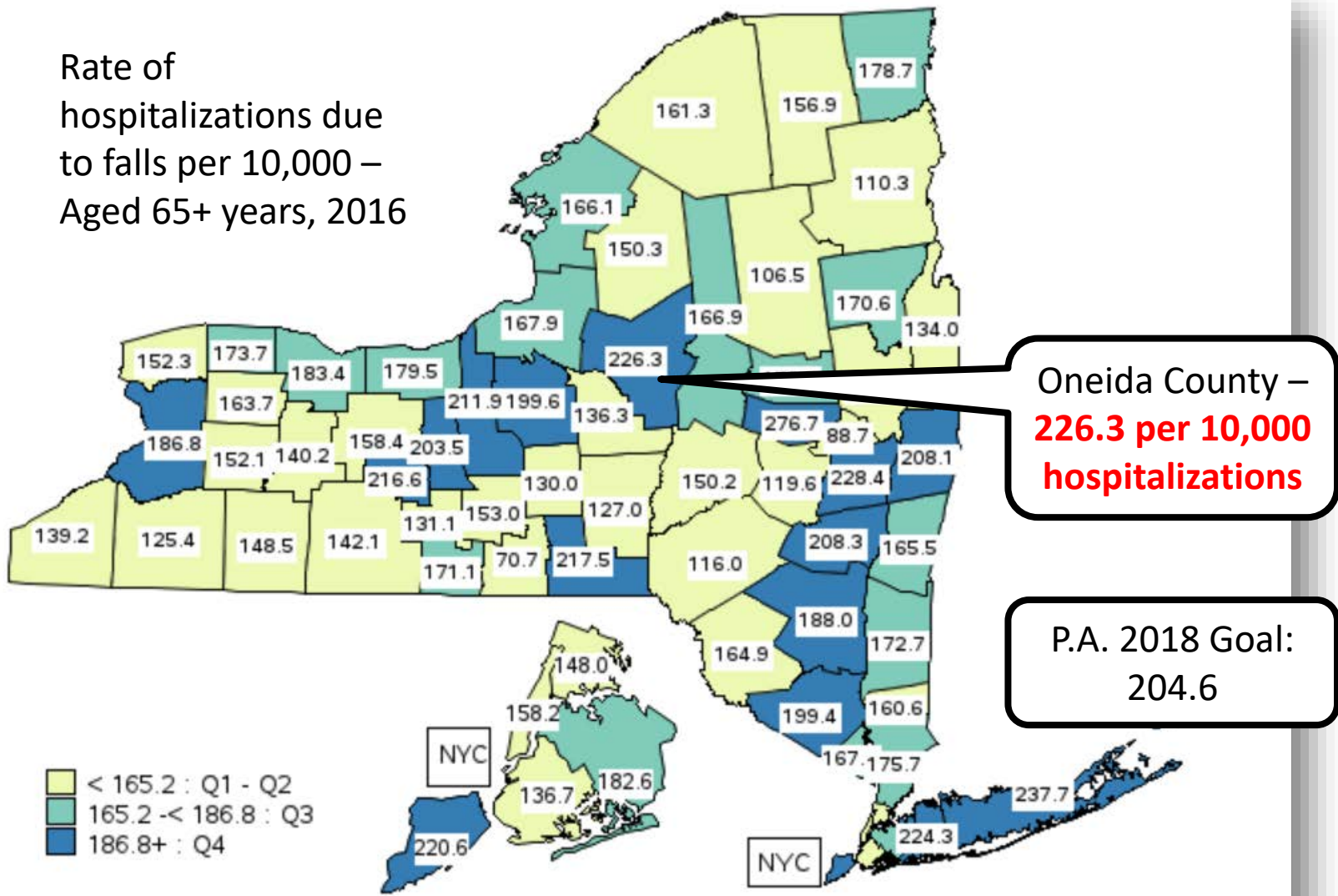
Pedestrian/
cyclist crashes

Lead poisoning

Foodborne disease

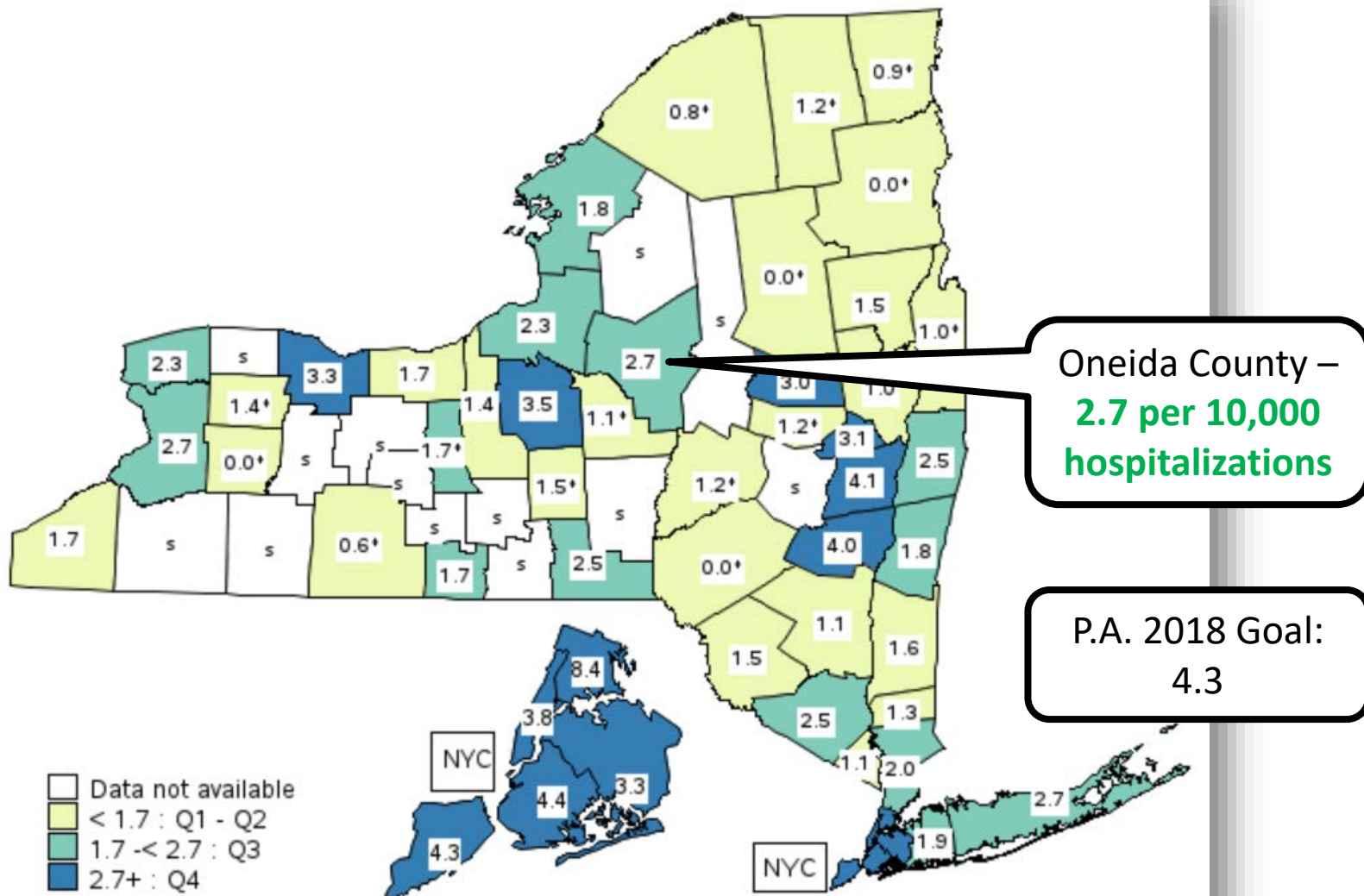
Falls

Rate of hospitalizations due to falls per 10,000 – Aged 65+ years, 2016



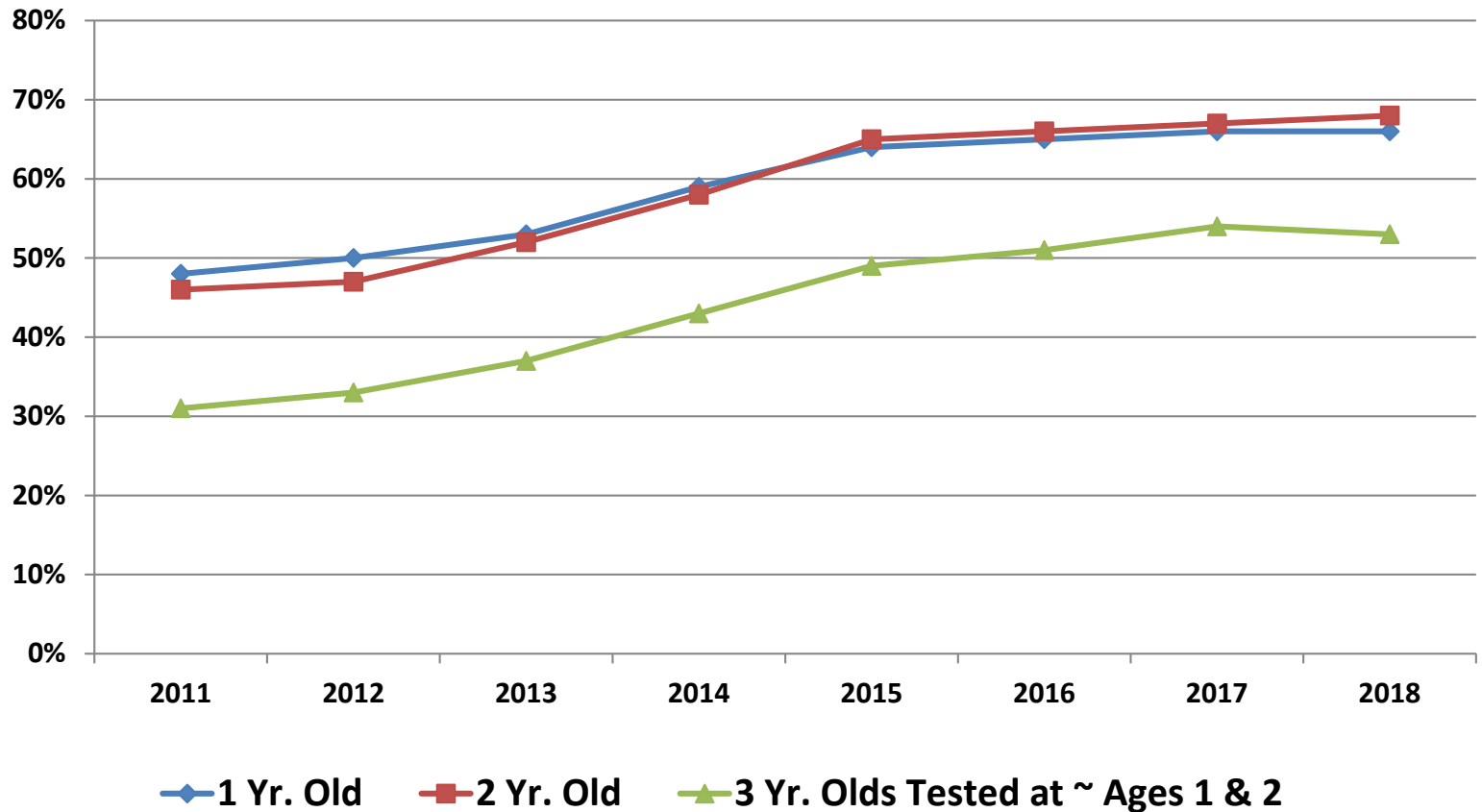
Source: 2016 NY Statewide Planning and Research Cooperative System data as of February 2018

Assault-Related Hospitalization



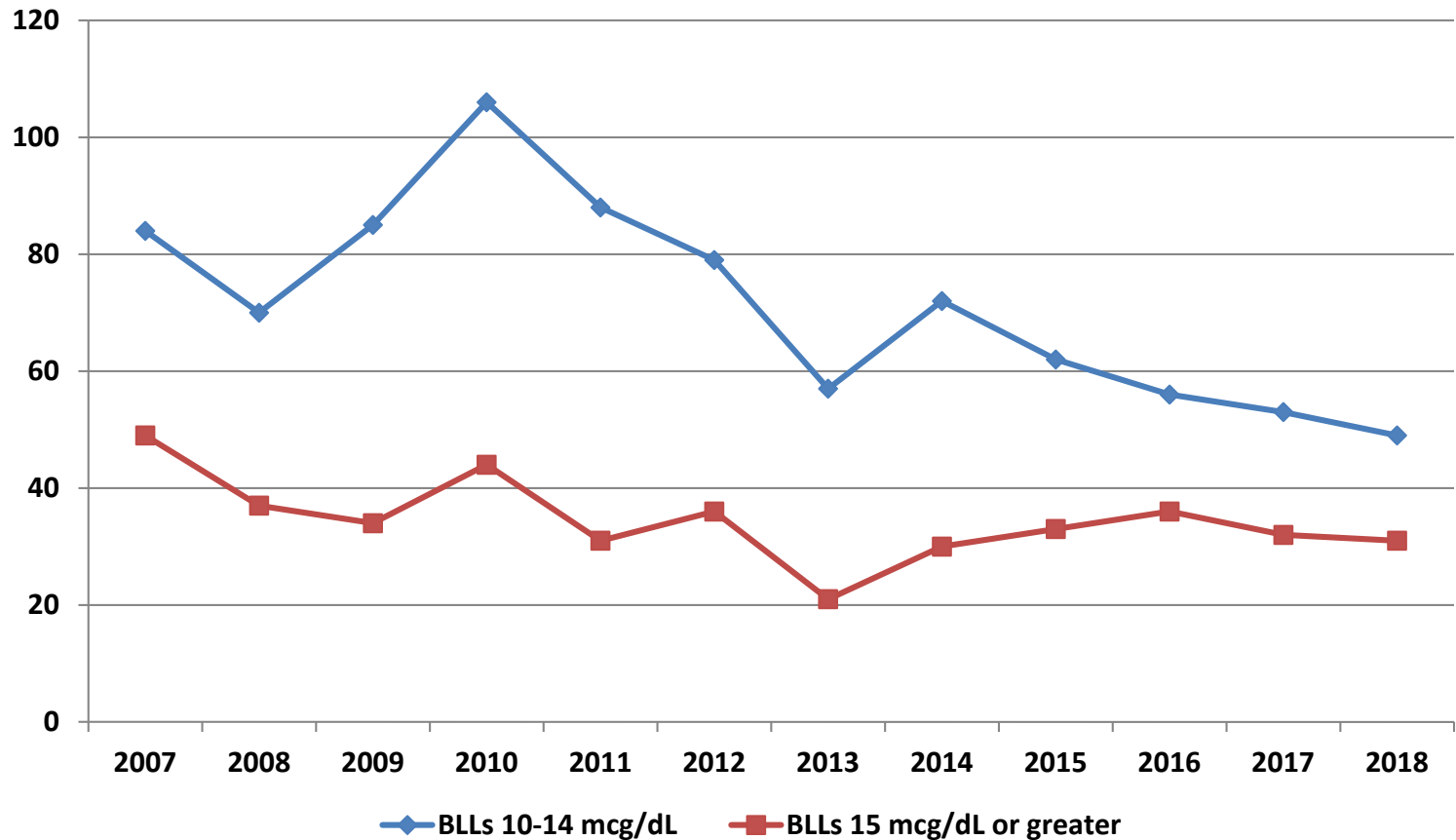
Lead poisoning

Percent of Children in Oneida County who received Blood Lead Level Test



Lead poisoning

Incidence of Children in Oneida County with Blood Lead Levels 10 mcg/dL or greater



Source: 2007-2018 NYS LeadWeb data (from Oneida County Health Dept. 2018 Annual Report)



Promote Healthy Women, Infants, & Children

1. Maternal & Women's Health

2. Perinatal & Infant Health

3. Child & Adolescent Health

4. Cross-Cutting issues

Maternal mortality

Infant mortality

Preterm birth

Neonatal abstinence syndrome

Sudden unexpected infant death

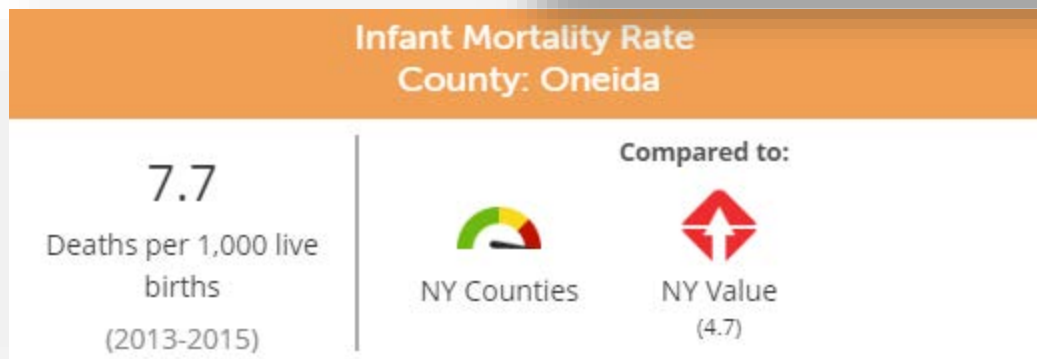
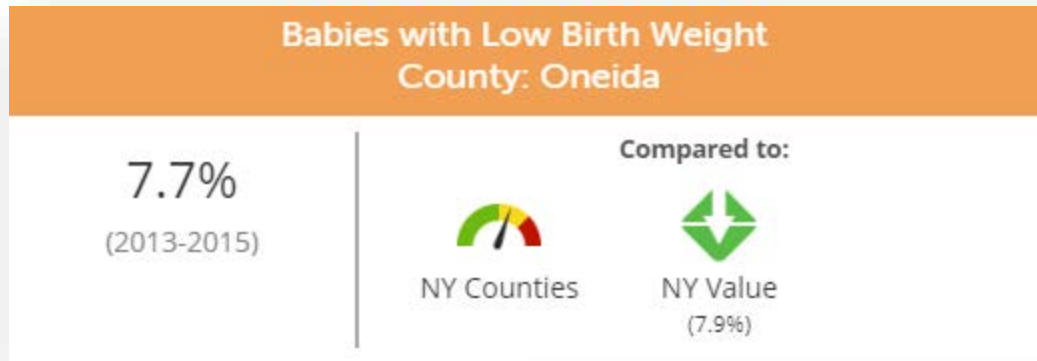
Sad/ hopeless teens

Youth suicide

Dental caries

Breastfeeding

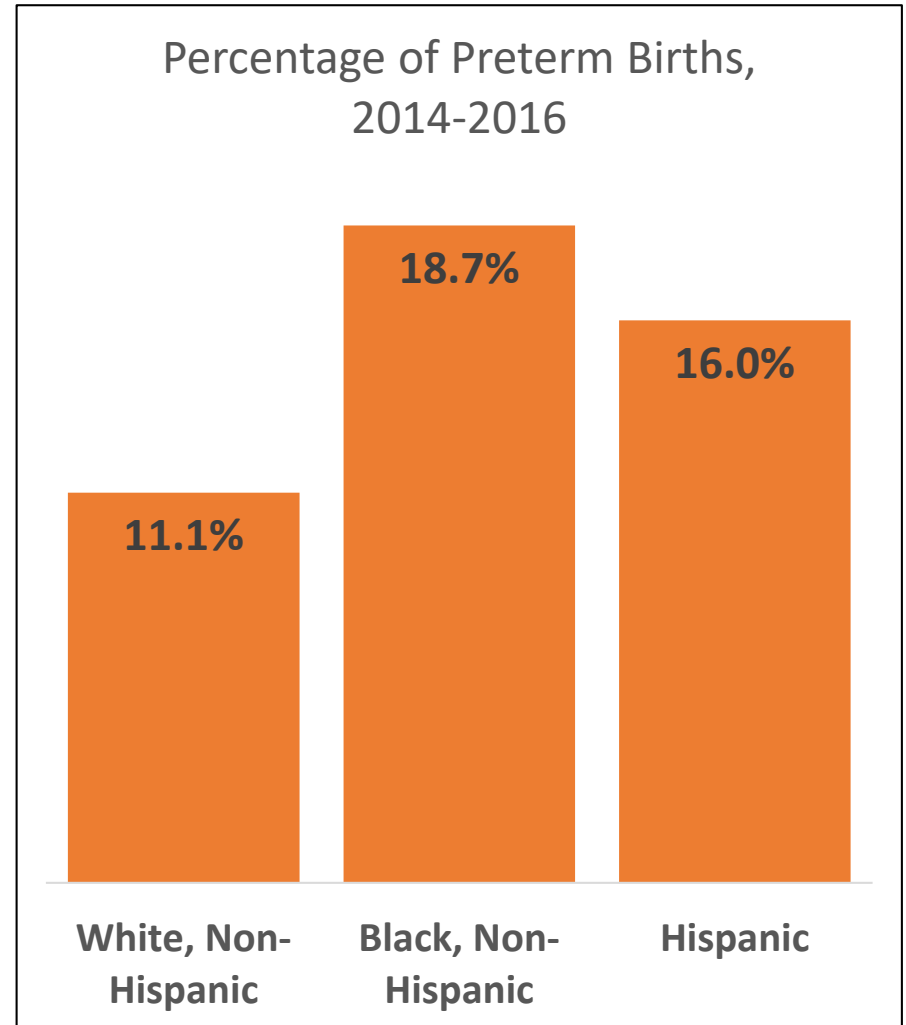
Perinatal & Infant Health



Preterm Birth: Disparities

Ratio of

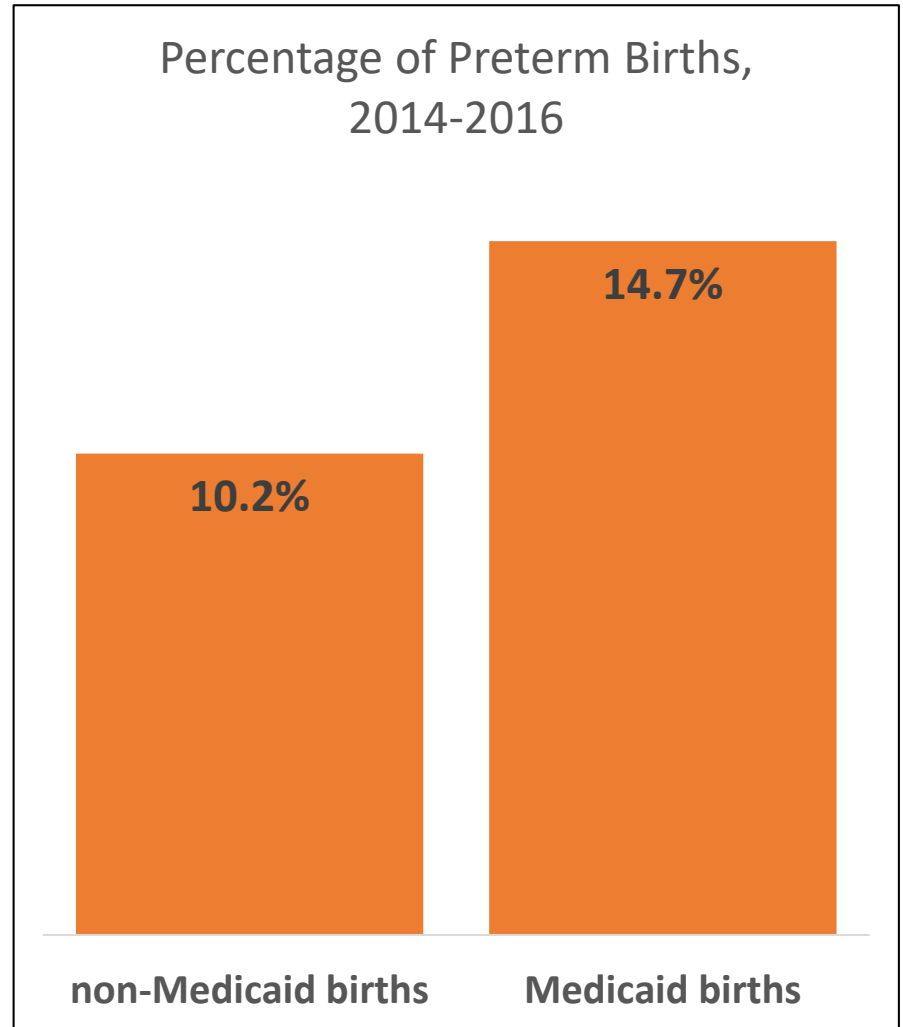
- Black non-Hispanics to White non-Hispanics is **1.68:1**
- Hispanics to White non-Hispanics is **1.45:1**



Preterm Birth: Disparities

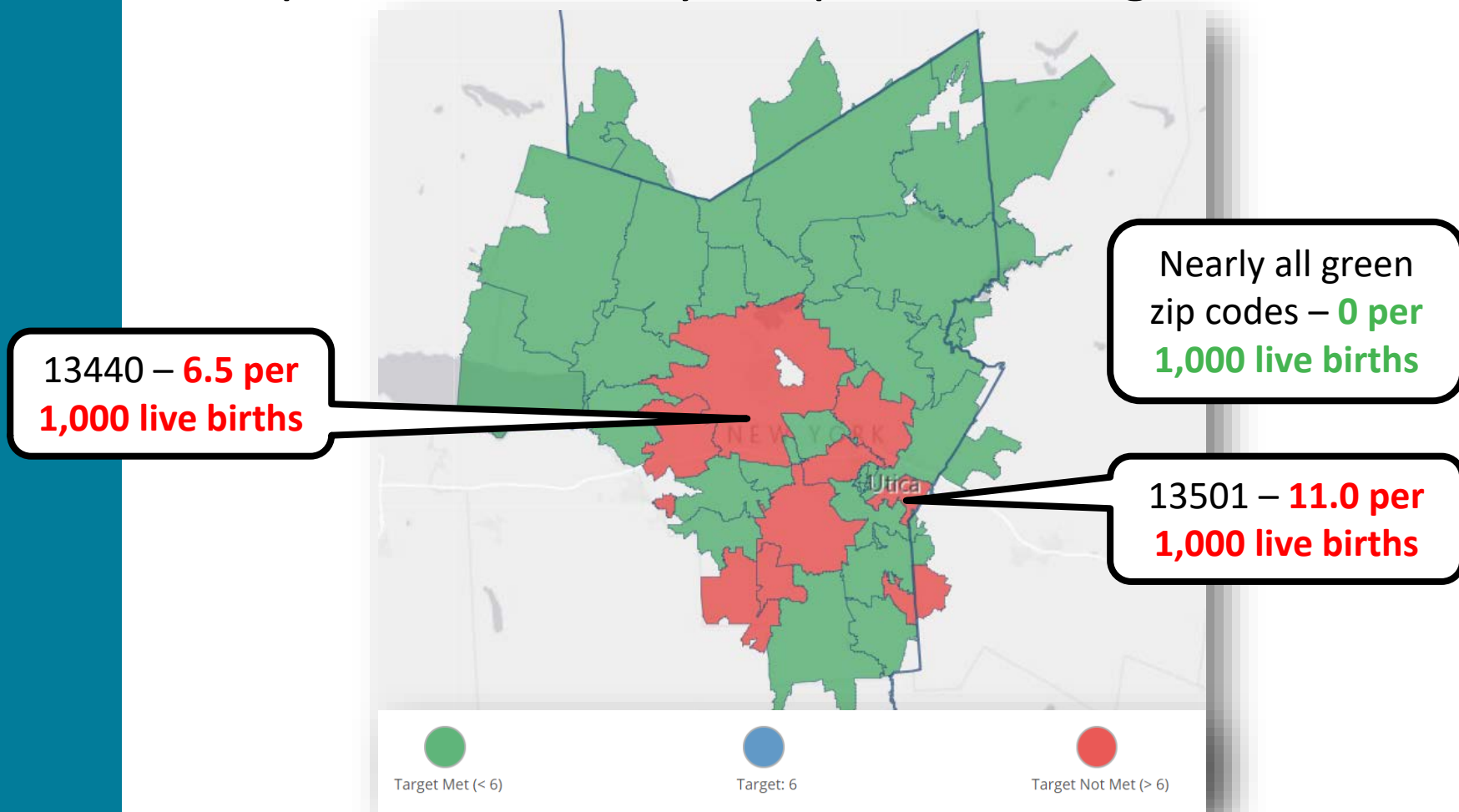
Ratio of

- Medicaid births to non-Medicaid births is **1.45:1**



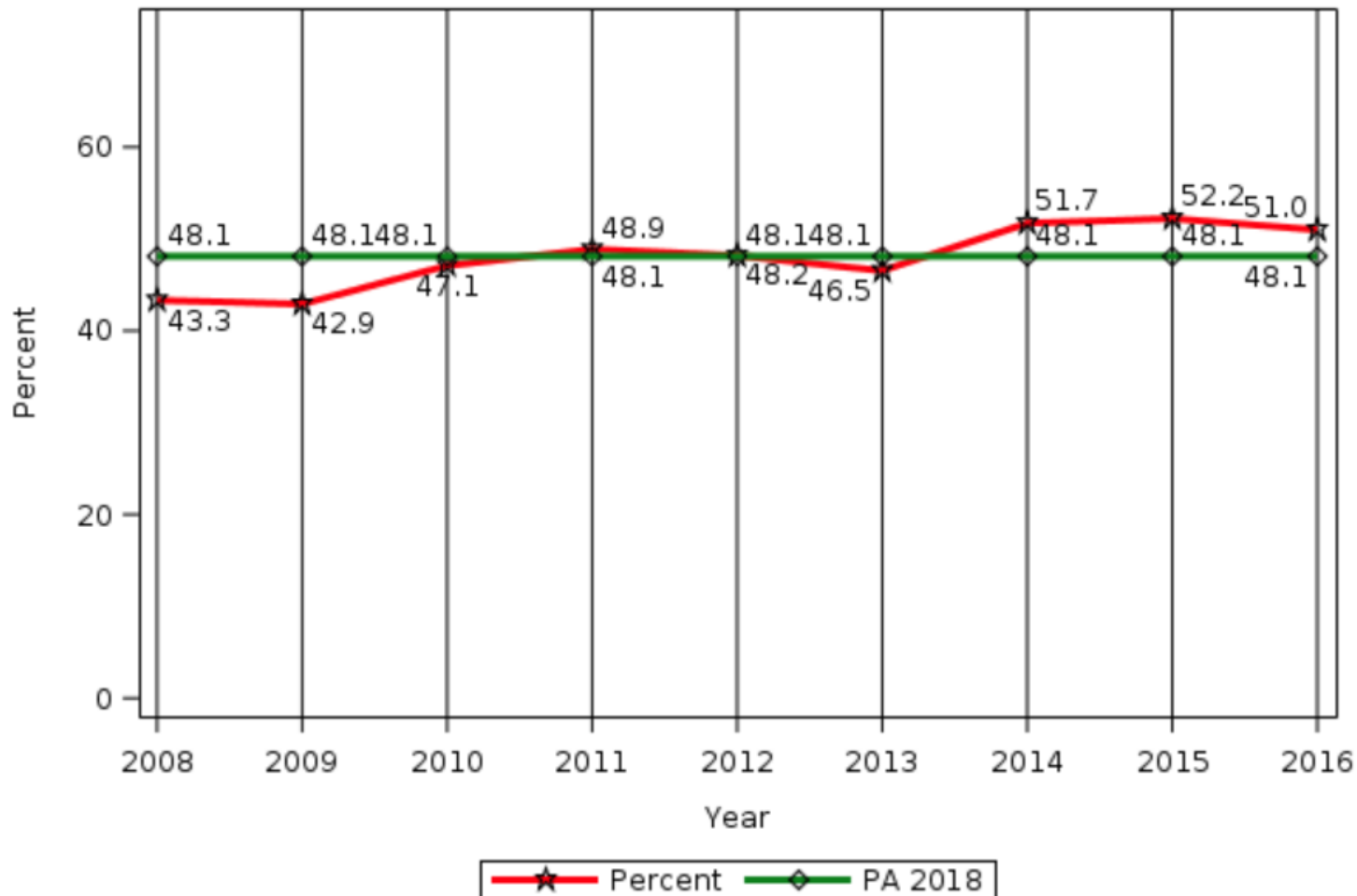
Infant Mortality Rate

Infant Mortality Rate by Zip Code,
compared to Healthy People 2020 Target



Breastfeeding

Oneida County - Percentage of infants exclusively breastfed in the hospital



Percentage of infants exclusively breastfed in the hospital, four year average, 2013-2016

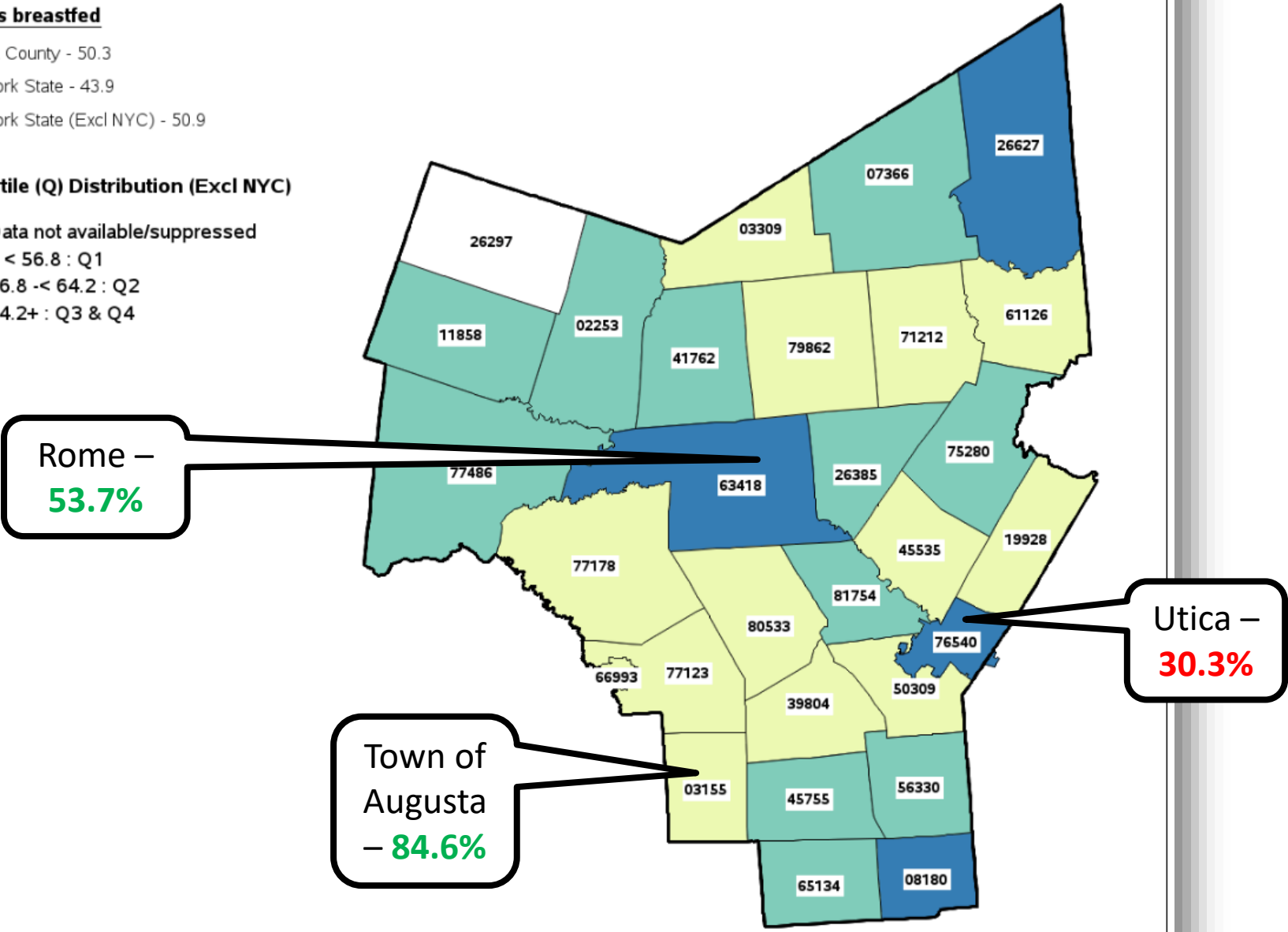
Oneida County Minor Civil Division (MCD) Map

Infants breastfed

Oneida County - 50.3
 New York State - 43.9
 New York State (Excl NYC) - 50.9

Quartile (Q) Distribution (Excl NYC)

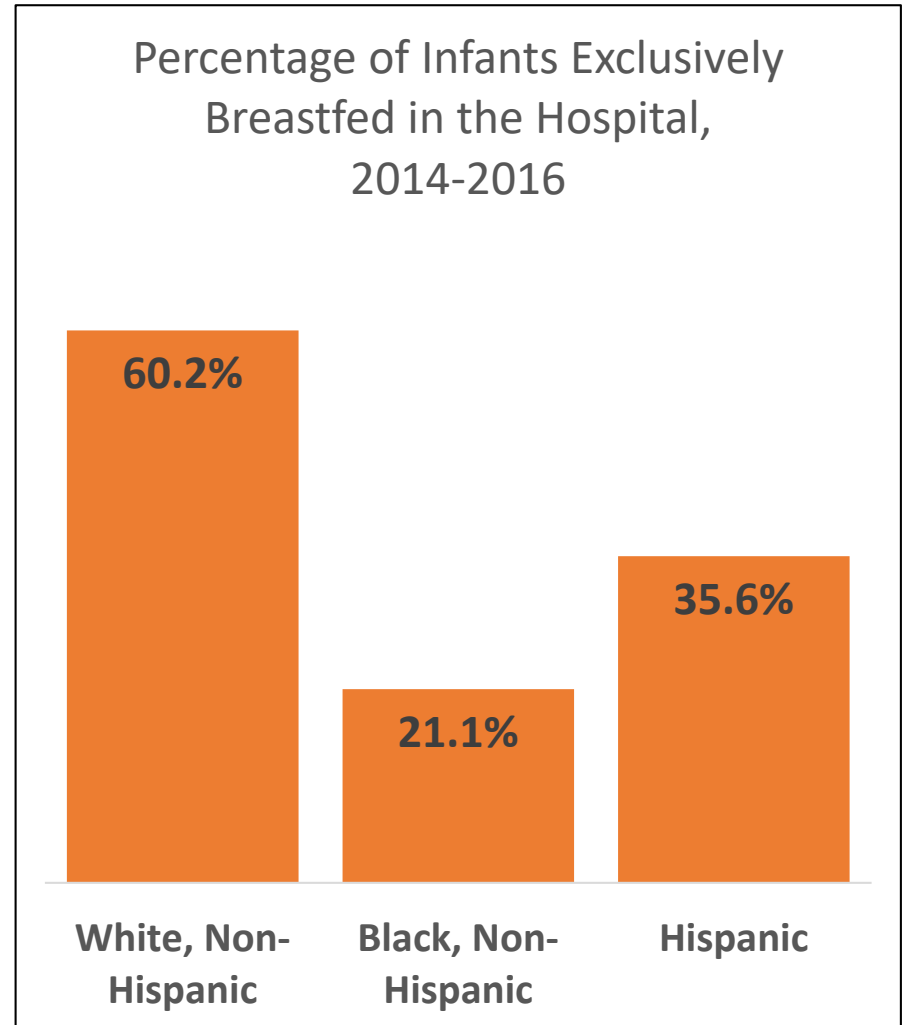
- Data not available/suppressed
- 0 < 56.8 : Q1
- 56.8 -< 64.2 : Q2
- 64.2+ : Q3 & Q4



Breastfeeding: Disparities

Ratio of

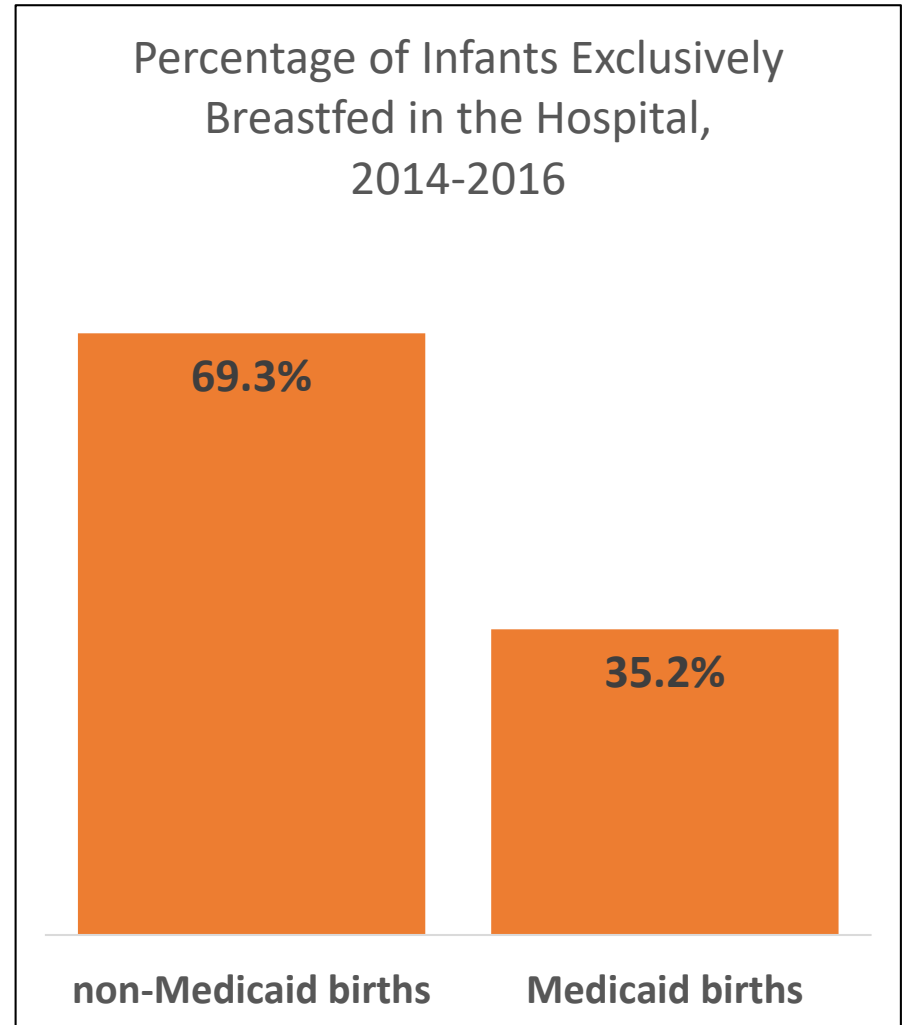
- Black non-Hispanics to White non-Hispanics is **0.35:1**
- Hispanics to White non-Hispanics is **0.59:1**



Breastfeeding: Disparities

Ratio of

- Medicaid births to non-Medicaid births is **0.51:1**





Promote Well-being and Prevent Mental and Substance Use Disorders

1. Promote Well-Being

2. Prevent Mental & Substance Use Disorders

Poor mental health

Binge drinking


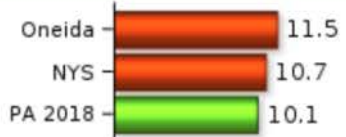

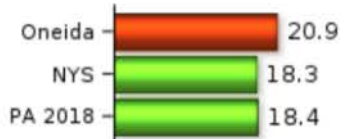

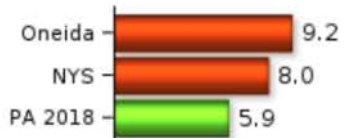
Substance misuse

Opioid overdose

Major depression

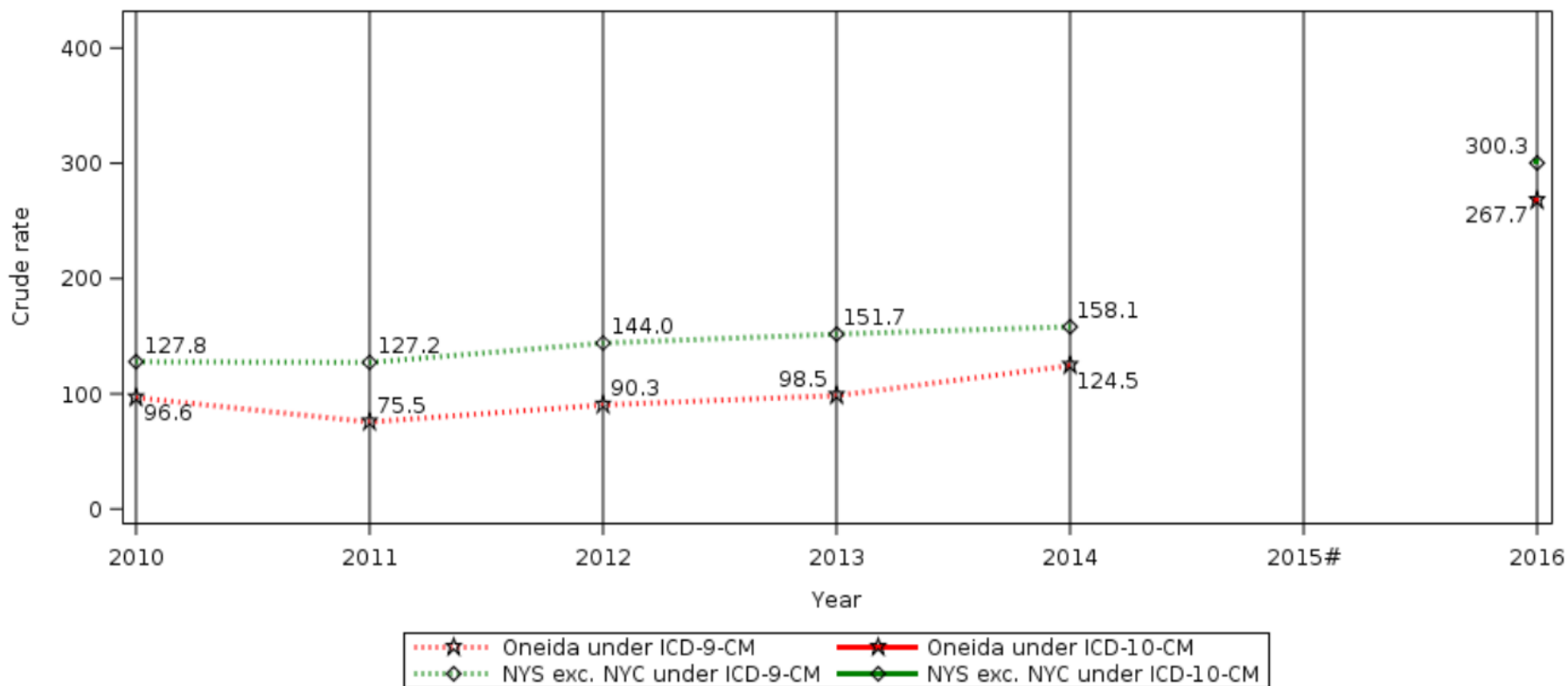
Suicide

A Snapshot

Oneida County - Prevention Agenda (PA) Indicators	Dial <i>i</i>	PA 2018 Objective and Most Recent Data <i>i</i>						
42 - Age-adjusted percentage of adults with poor mental health for 14 or more days in the last month	 <p>11.5</p>	 <table border="1"> <tr><td>Oneida</td><td>11.5</td></tr> <tr><td>NYS</td><td>10.7</td></tr> <tr><td>PA 2018</td><td>10.1</td></tr> </table>	Oneida	11.5	NYS	10.7	PA 2018	10.1
Oneida	11.5							
NYS	10.7							
PA 2018	10.1							
43 - Age-adjusted percentage of adults binge drinking during the past month	 <p>20.9</p>	 <table border="1"> <tr><td>Oneida</td><td>20.9</td></tr> <tr><td>NYS</td><td>18.3</td></tr> <tr><td>PA 2018</td><td>18.4</td></tr> </table>	Oneida	20.9	NYS	18.3	PA 2018	18.4
Oneida	20.9							
NYS	18.3							
PA 2018	18.4							
44 - Age-adjusted suicide death rate per 100,000 population	 <p>9.2</p>	 <table border="1"> <tr><td>Oneida</td><td>9.2</td></tr> <tr><td>NYS</td><td>8.0</td></tr> <tr><td>PA 2018</td><td>5.9</td></tr> </table>	Oneida	9.2	NYS	8.0	PA 2018	5.9
Oneida	9.2							
NYS	8.0							
PA 2018	5.9							

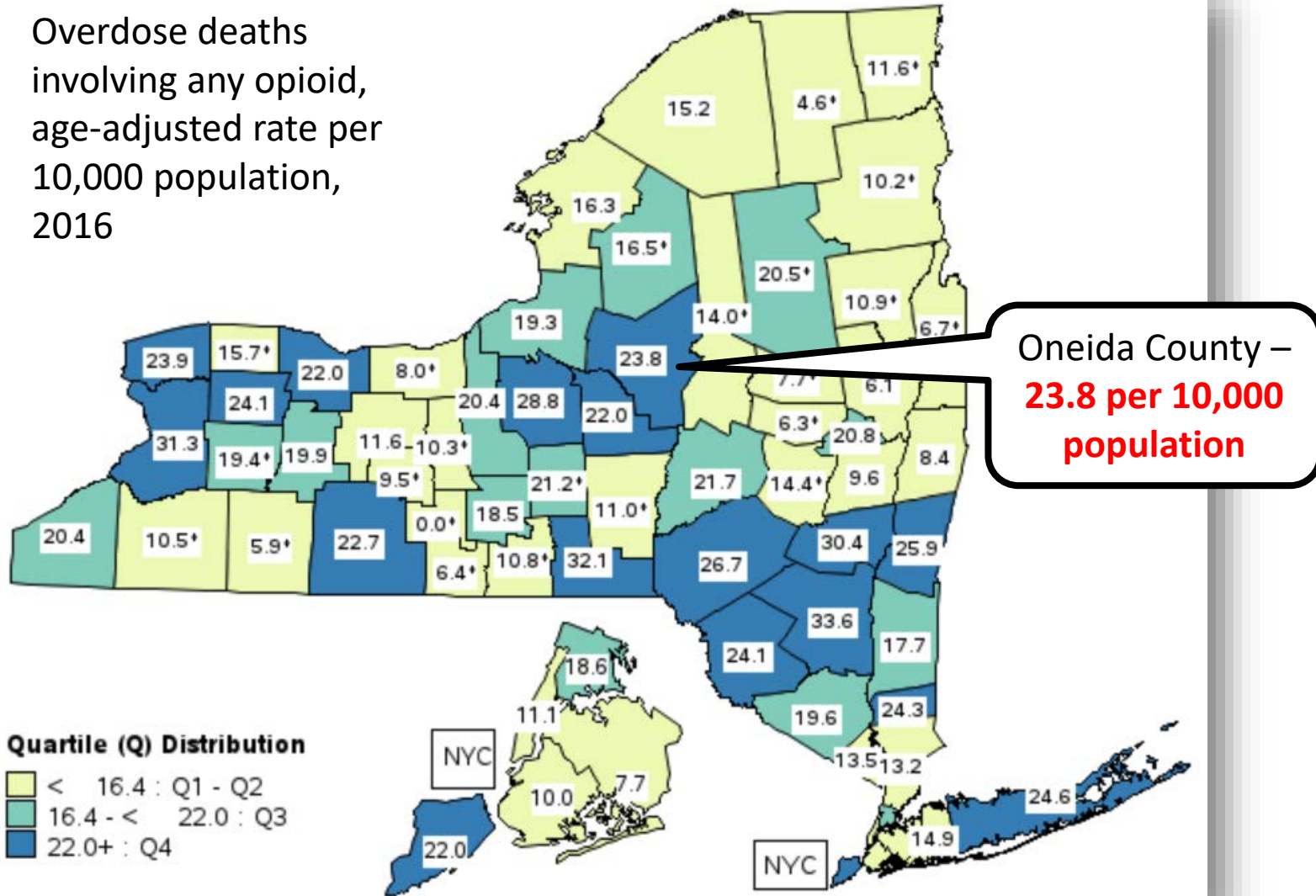
Opioid Burden

Outpatient ED visits and hospital discharges for non-fatal opioid overdose, abuse, dependence, and unspecified use; and opioid overdose deaths, crude rate per 100,000 pop.



Overdose Deaths due to Opioids

Overdose deaths involving any opioid, age-adjusted rate per 10,000 population, 2016





Prevent Communicable Diseases

1. Vaccine-preventable diseases

2. HIV

3. STIs

4. HCV

5. Antibiotic resistance

Immunizations

Influenza

Pneumonia

HIV




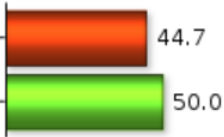

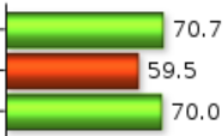
HPV

STIs

Hepatitis C

Healthcare-Associated Infections

Immunizations

Oneida County - Prevention Agenda (PA) Indicators	Dial <i>i</i>	PA 2018 Objective and Most Recent Data <i>i</i>
23 - Percentage of children with 4:3:1:3:3:1:4 immunization series - Aged 19-35 months	 <p>70.1</p>	 <p>Oneida 70.1 PA 2018 80.0</p>
24 - Percentage of adolescent females that received 3 or more doses of HPV vaccine - Aged 13-17 years	 <p>44.7</p>	 <p>Oneida 44.7 PA 2018 50.0</p>
25 - Percentage of adults with flu immunization - Aged 65+ years ^b	 <p>70.7</p>	 <p>Oneida 70.7 NYS 59.5 PA 2018 70.0</p>

STIs and HIV

Chlamydia Incidence Rate

352.0

Cases per 100,000
population
(2013-2015)



NY Counties

Compared to:



NY Value
(503.2)

[Learn More](#) [Save Card](#)

Gonorrhea Incidence Rate

51.9

Cases per 100,000
population
(2013-2015)



NY Counties

Compared to:



NY Value
(111.8)

[Learn More](#) [Save Card](#)

HIV Diagnosis Rate

5.0

Cases per 100,000
population
(2013-2015)



NY Counties
(2011-2013)

Compared to:



NY Value
(16.9)

[Learn More](#) [Save Card](#)

10-minute Break



Prevent Chronic Diseases

1. Healthy Eating & Food Security

2. Physical Activity

3. Tobacco Prevention

4. Preventive Care & Management

Obesity

Cancer

Heart Disease

Hypertension

Diabetes

Asthma

Arthritis

Kidney disease

Group Discussion:



Prevent Chronic Diseases

- What are the issues in our community?
- What should we do something about?

Make notes on your individual handouts and prepare to vote for a Focus Area.



Promote a Healthy & Safe Environment

1. Injuries, Violence, & Occupational Health

2. Outdoor Air Quality

3. Built & Indoor Environments

4. Water Quality

5. Food & Consumer Products

Falls

Homicide

Assault

Occupational Injury

Pedestrian/
cyclist crashes

Lead poisoning

Foodborne disease

Group Discussion:



Promote a Healthy & Safe Environment

- What are the issues in our community?
- What should we do something about?

Make notes on your individual handouts and prepare to vote for a Focus Area.



Promote Healthy Women, Infants, & Children

1. Maternal & Women's Health

2. Perinatal & Infant Health

3. Child & Adolescent Health

4. Cross-Cutting issues

Maternal mortality

Infant mortality

Preterm birth

Neonatal abstinence syndrome

Sudden unexpected infant death

Sad/ hopeless teens

Youth suicide

Dental caries

Breastfeeding

Group Discussion:



Promote Healthy Women, Infants, & Children

- What are the issues in our community?
- What should we do something about?

Make notes on your individual handouts and prepare to vote for a Focus Area.



Promote Well-being and Prevent Mental and Substance Use Disorders

1. Promote Well-Being

2. Prevent Mental & Substance Use Disorders

Poor mental health

Binge drinking

Substance misuse

Opioid overdose

Major depression

Suicide

Group Discussion:



Promote Well-being and Prevent Mental and Substance Use Disorders

- What are the issues in our community?
- What should we do something about?

Make notes on your individual handouts and prepare to vote for a Focus Area.



Prevent Communicable Diseases

1. Vaccine-preventable diseases

2. HIV

3. STIs

4. HCV

5. Antibiotic resistance

Immunizations

Influenza

Pneumonia

HIV

HPV

STIs

Hepatitis C

Healthcare-Associated Infections

Group Discussion:



Prevent Communicable Diseases

- What are the issues in our community?
- What should we do something about?

Make notes on your individual handouts and prepare to vote for a Focus Area.

**Oneida County
Social Determinants
of Health**

Oneida County Children

- **49,236 children**
(under 18)
- **41%** of children live in
single-parent
households



Oneida County Older Adults

- **41,019 adults** age 65 or older
- **35.3%** of adults 65+ have a disability
- **29.8%** of adults 65+ live alone



Education

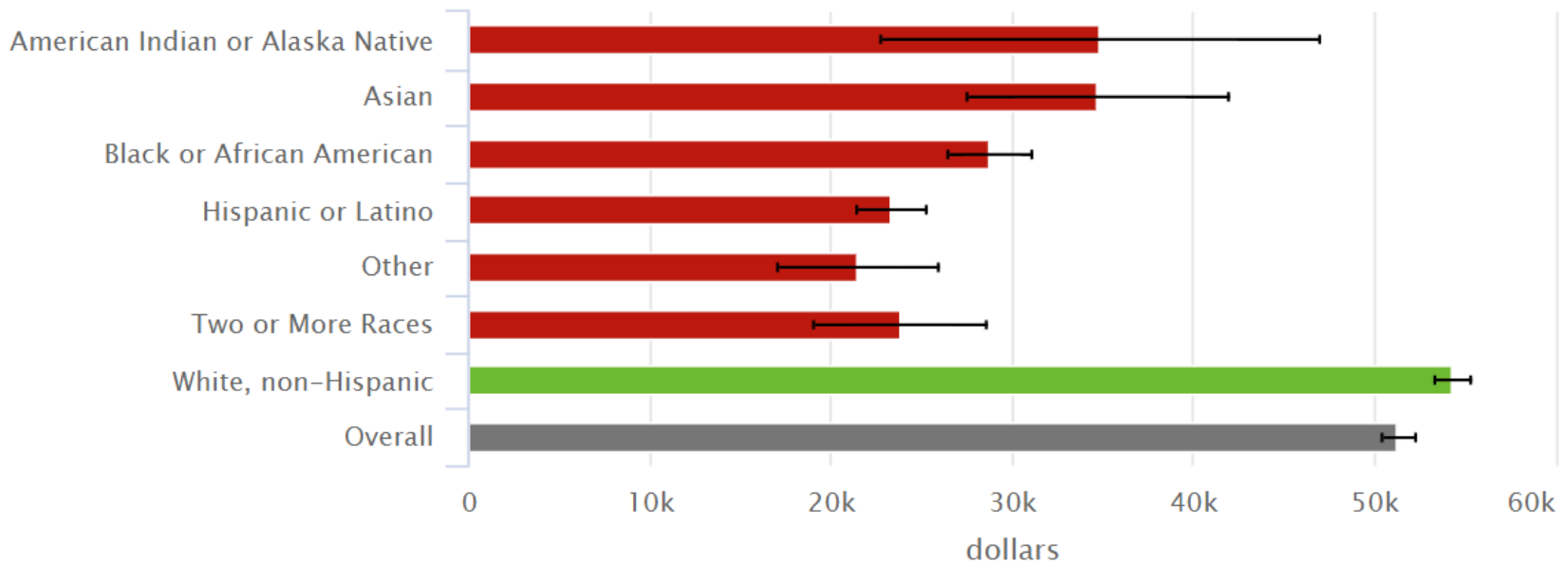
- **88.1%** of people 25+ have a high school degree or higher
- **23.9%** of people 25+ have a Bachelor's degree or higher




Income

- Median Household Income: **\$51,316**

Median Household Income by Race/Ethnicity

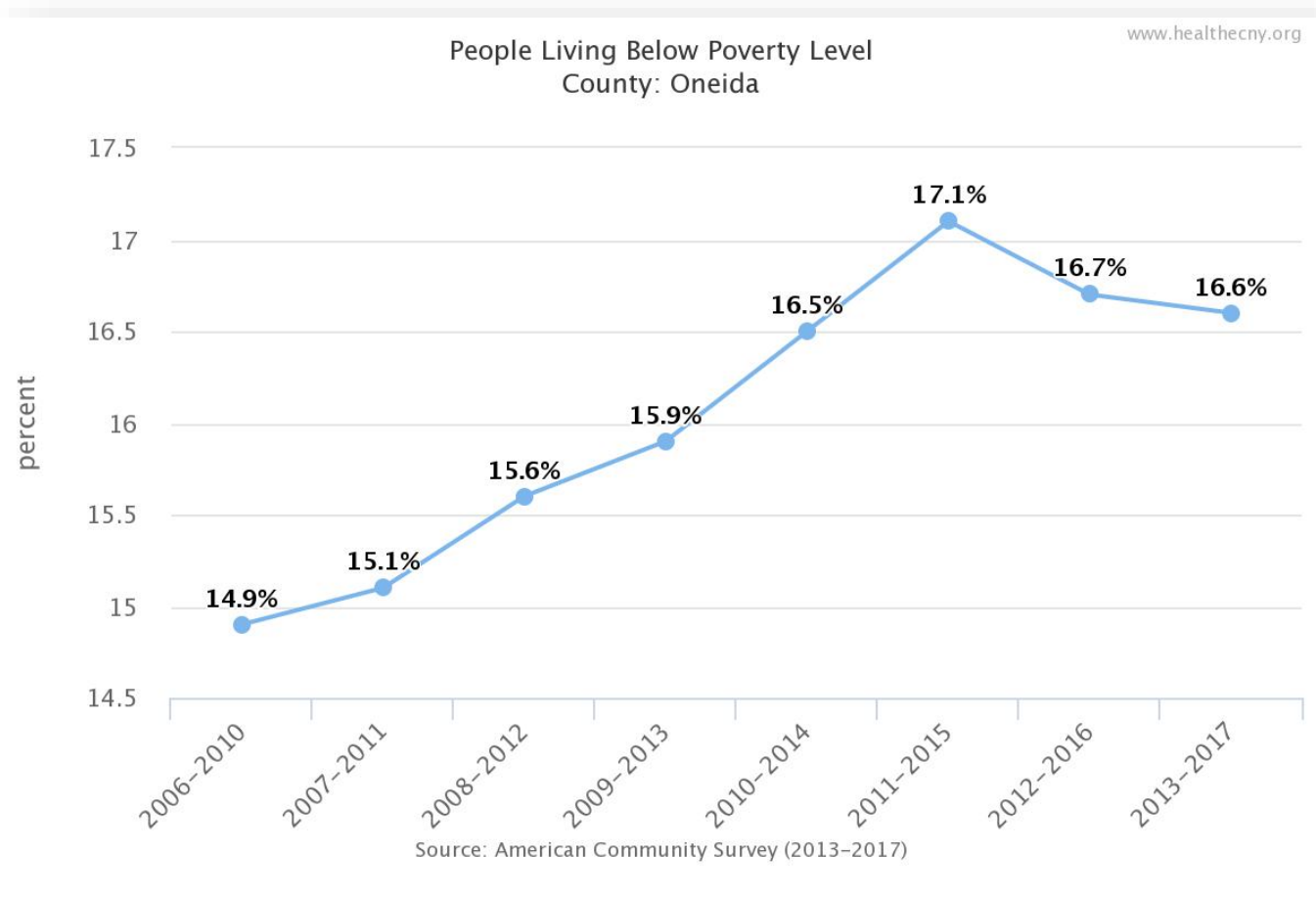


 Significantly **better** than the overall value

 Significantly **worse** than the overall value

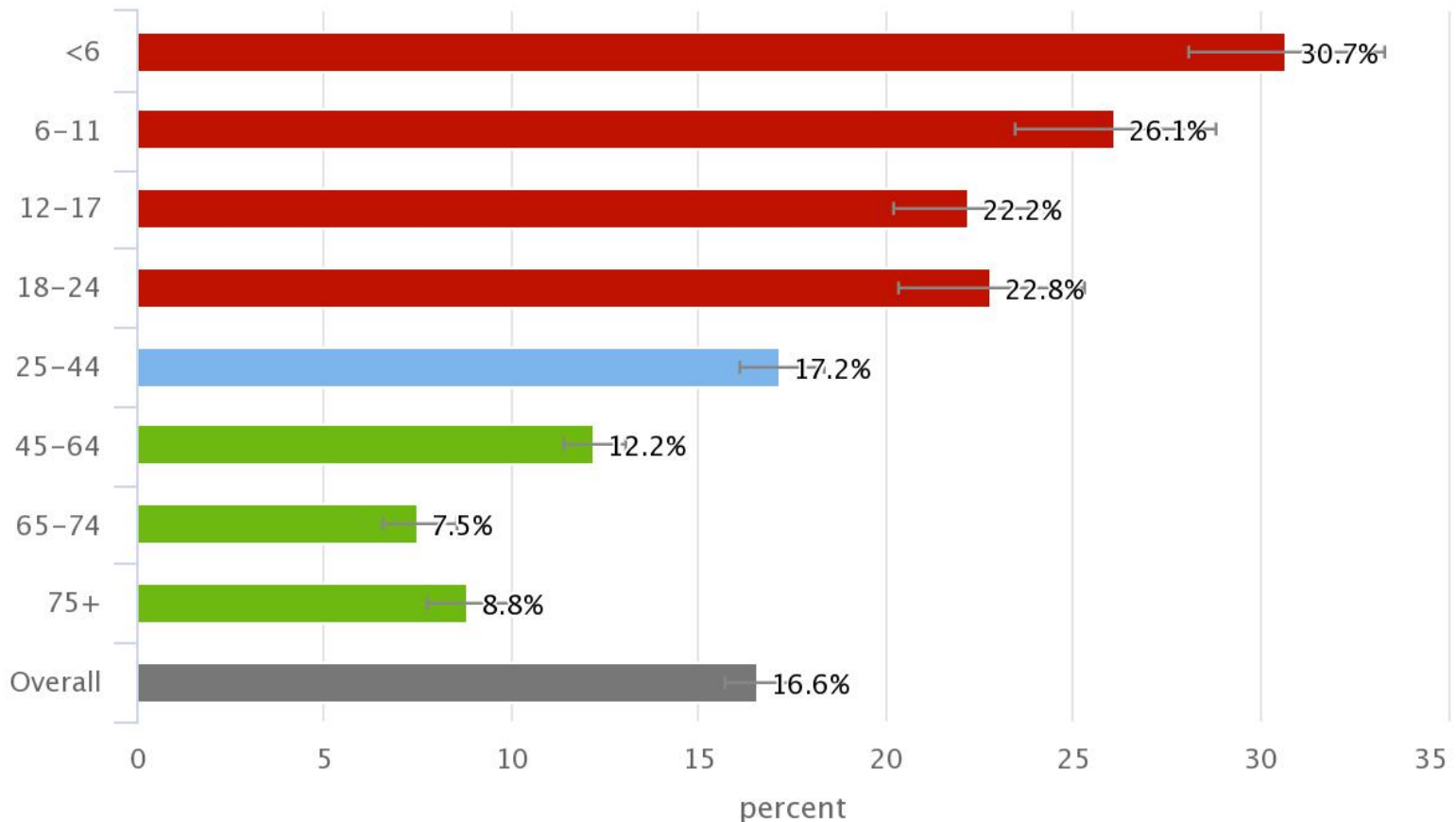
Poverty

- 16.6% of people live below poverty level



Poverty

People Living Below Poverty Level by Age
County: Oneida

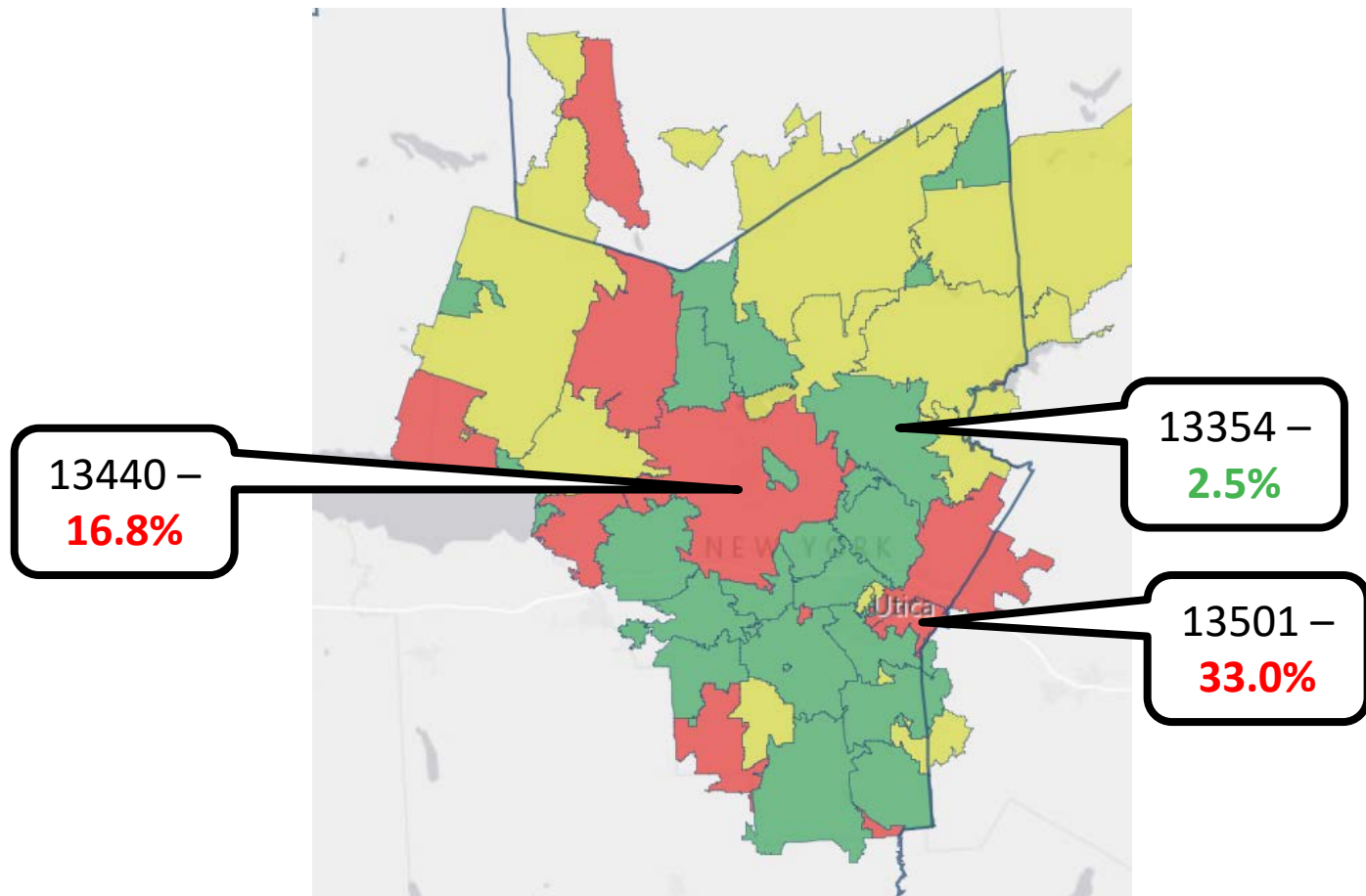


Source: American Community Survey (2013-2017)

www.healthcny.org

Poverty

People living below poverty level – by Zip Code



Housing

- **29%** of adults experienced housing insecurity during the past 12 months
- **15%** have severe housing problems (at least 1 of the following):
 - Overcrowding
 - High housing costs
 - Lack of kitchen facilities
 - Lack of plumbing facilities



Health Care Access

- **95.5%** of adults (aged 18-64) have health insurance
- **90.6%** of adults who have a regular health care provider
- **9.5%** of adults who do not receive medical care due to cost

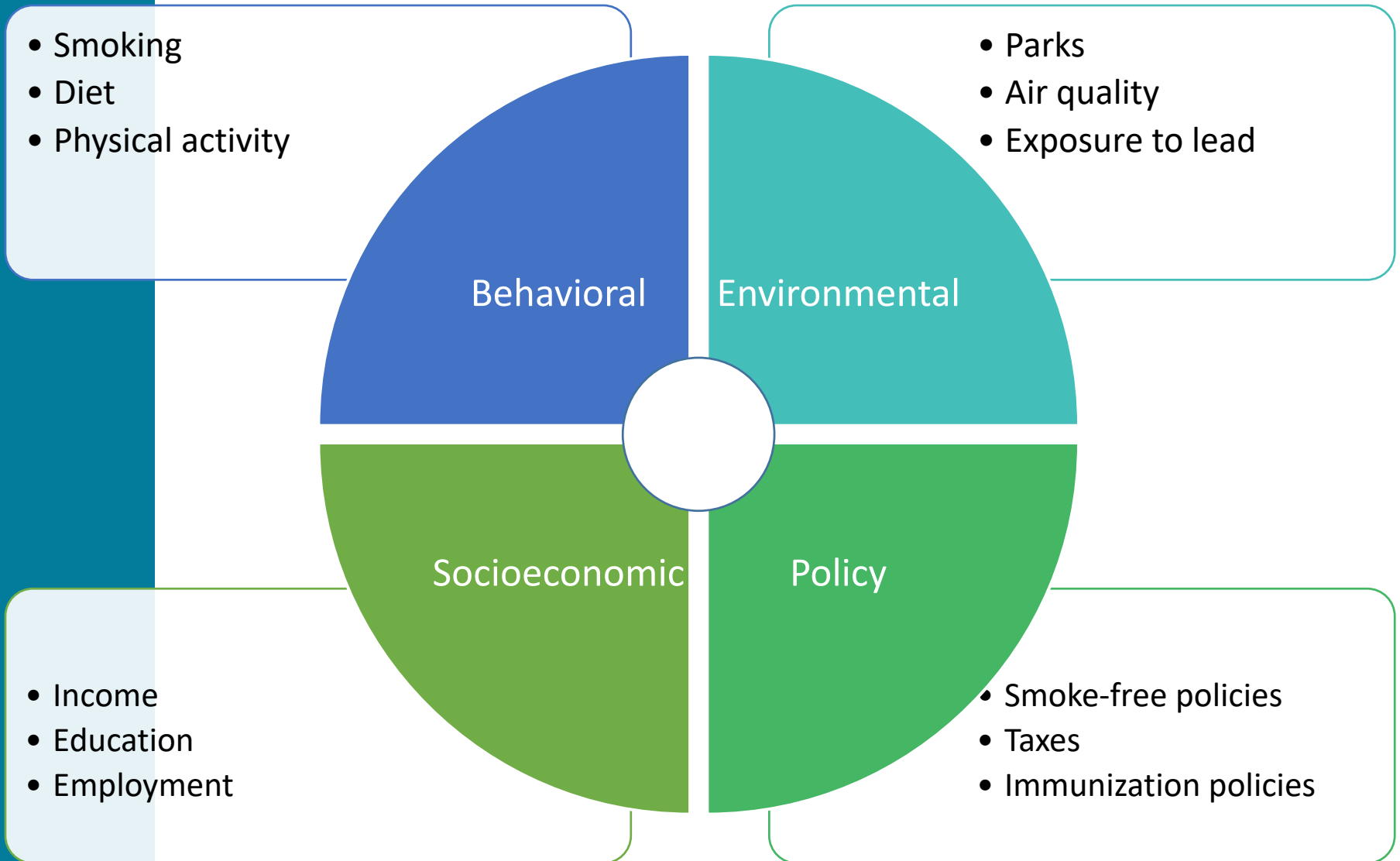


**Group Discussion
and
Your Feedback**

What are some factors that have a **positive impact on health in Oneida County?**

Which factors have a **negative impact?**

Some factors that influence health



Next Steps

Thank you!