

# Oneida County

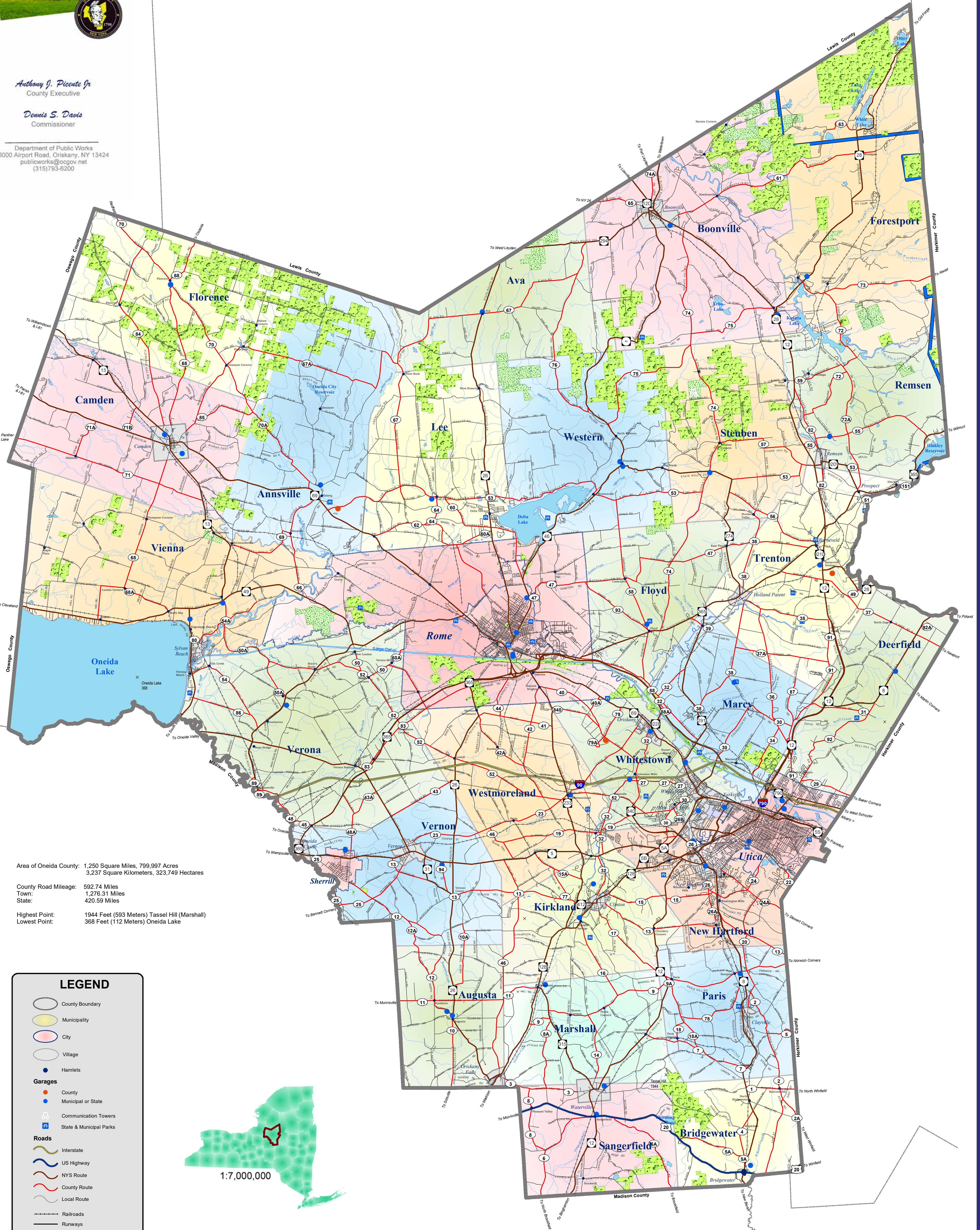
NEW YORK



*Anthony J. Picante Jr.*  
County Executive

*Dennis S. Davis*  
Commissioner

Department of Public Works  
6000 Airport Road, Oneida, NY 13424  
publicworks@ocgov.net  
(315)793-6200



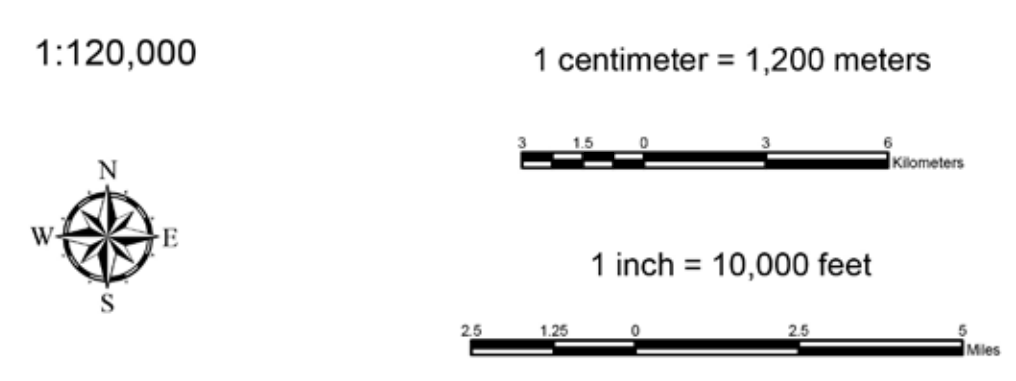
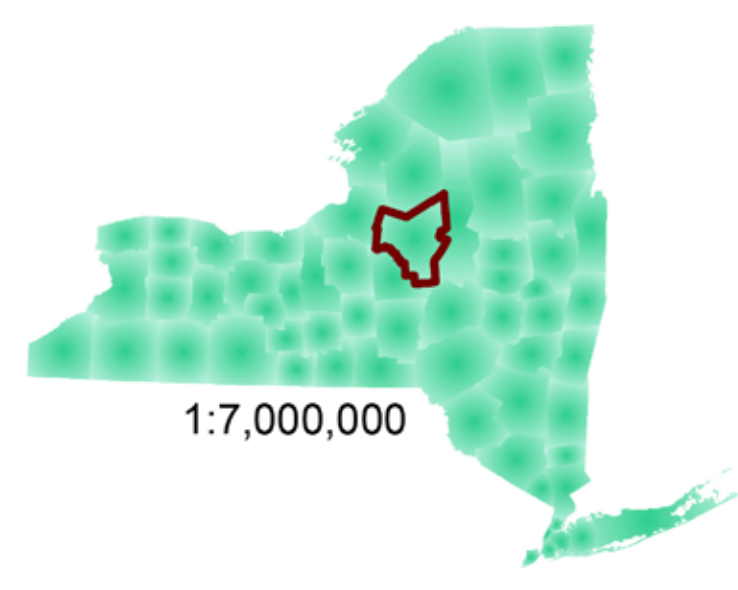
Area of Oneida County: 1,250 Square Miles, 799,997 Acres  
3,237 Square Kilometers, 323,749 Hectares

County Road Mileage: 592.74 Miles  
Town: 1,276.31 Miles  
State: 420.59 Miles

Highest Point: 1944 Feet (593 Meters) Tassel Hill (Marshall)  
Lowest Point: 368 Feet (112 Meters) Oneida Lake

**LEGEND**

- County Boundary
- Municipality
- City
- Village
- Hamlets
- Garages**
  - County
  - Municipal or State
  - Communication Towers
  - State & Municipal Parks
- Roads**
  - Interstate
  - US Highway
  - NYS Route
  - County Route
  - Local Route
  - Railroads
  - Runways
- State Lands
- Adirondack State Park Boundary
- Water
- Streams



Copyright, County of Oneida, 2019  
Utica, New York 13501

This information was compiled for planning purposes and may not be reproduced or transmitted for commercial purposes or for any other purpose without the prior authorization of Herkimer Oneida Counties Comprehensive Planning Program (HOCPPP). HOCPPP shall not be liable for misuse or misrepresentation of this information. HOCPPP makes no claim as to the accuracy or completeness of the data contained herein.

