

Presenters

Lois Chaplin

Bicycle & Pedestrian Specialist
Cornell Local Roads Program

Dana R. Crisino, AICP

Senior Planner
City of Utica

George Frantz

Principal
George R. Frantz & Associates

Robert J. Holzman, AICP

Director of Planning/Saratoga
Senior Associate, Saratoga Associates

Riele Morgiewicz

Senior Counsel
NYS Department of State

Jane E. Rice, JD, AICP

Community & Land Use Planner
Planning Division Director, Environmental
Design & Research

Bob Somers, Ph.D.

Manager, Agricultural Protection Unit
NYS Department of Agriculture & Markets

Frederick B. Talbot, Jr.

Landscape Architect, P.C.
Talbot Planning and Design

Erin Thomas

Land Use Training Specialist
NYS Department of State

TO REGISTER:

Use Separate Registration Form

Early Registration - \$30.00

Deadline: September 8, 2010

Final Registration - \$35.00

Deadline: September 22, 2010

Directions to MVCC:

From the East or West

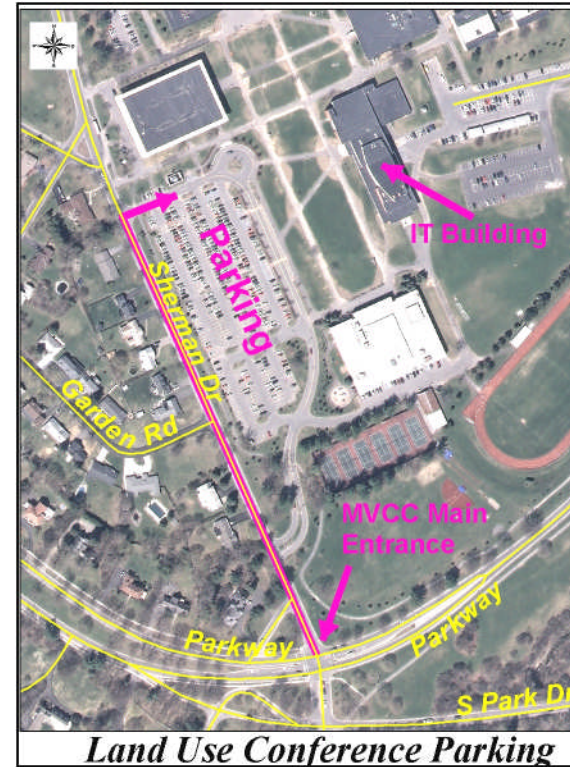
1. Take I 90 to Exit 31 (Utica).
2. After the toll booth, follow Route 790 to Rte 12.
3. Take Route 12 South to the Burrstone Road exit.
4. Follow the exit ramp to Burrstone Road.
5. Stay in the right lane on Burrstone Road and continue across Genesee Street. You will be on Memorial Parkway East.
6. Follow Memorial Parkway approximately 3 miles.
7. At the intersection of Sherman Drive and Memorial Parkway, turn left.
8. MVCC will be on your right.

From the North

1. Follow Route 12 South into Utica.
2. Get off at the Burrstone Road exit.
3. Follow the exit ramp to Burrstone Road.
4. Stay in the right lane on Burrstone Road and continue across Genesee Street. You will be on Memorial Parkway East.
5. Follow Memorial Parkway approximately 3 miles.
6. At the intersection of Sherman Drive and Memorial Parkway, turn left.
7. MVCC will be on your right.

From the South

1. Follow Route 12 North into Utica.
2. Get off at the Burrstone Road exit.
3. Follow the exit ramp to Burrstone Road.
4. Stay in the right lane on Burrstone Road and continue across Genesee Street. You will be on Memorial Parkway East.
5. Follow Memorial Parkway approximately 3 miles.
6. At the intersection of Sherman Drive and Memorial Parkway, turn left.
7. MVCC will be on your right.



HOCCPP's Land Use Training Conference provides an opportunity for local planning and zoning board members to receive training on a variety of land use topics. **Those who participate in the conference will be able to receive 5 hours of training credits.**

For more information on local government training, requirements, or for other helpful tools visit the New York State Department of State's Web site at:

www.dos.state.ny.us/lgss/training.htm

Herkimer-Oneida Counties Comprehensive Planning Program

Land Use Training Conference



**Saturday, October 2, 2010
8:30 a.m. to 3:00 p.m.**

**Mohawk Valley Community College
Information Technology Building
Utica, New York**

**Herkimer-Oneida Counties
Comprehensive Planning Program
321 Main Street
Utica, NY 13501
(315)798-5710
landuseconference@ocgov.net**

Conference Schedule

8:30 a.m. Registration

9:00 a.m.	<p style="text-align: center;">The Do's and Don'ts of Site Plan Review <i>Frederick B. Talbot, Talbot Planning & Design</i></p> <p>A Understanding the content, organization, and the purpose of information contained in site plans. The session will review how to read a site plan and work with developers and applicants.</p>	<p style="text-align: center;">Green Infrastructure & the Site Plan Approval Process <i>Jane Rice, Environmental Design & Research</i></p> <p>Green infrastructure initiatives play an important role in addressing cultural, economic and public health issues for your community. As community leaders, do you know what to look for and what you can do in regards to green infrastructure and the site plan review process in your community? This presentation will help you get started.</p>	<p style="text-align: center;">Agricultural Trends as they Relate to Local Governments <i>Bob Somers, NYS Dept. of Agriculture & Markets</i></p> <p>A discussion of recent agricultural trends and how they relate to local communities.</p>
10:45 a.m.	Break		
11:00 a.m.	<p style="text-align: center;">Farm-Friendly Zoning <i>George Frantz, George R. Frantz & Assoc.</i></p> <p>B A discussion of ways in which New York State towns can support local agricultural operations through updated zoning regulations.</p>	<p style="text-align: center;">Complete Streets <i>Lois Chaplin, Cornell Local Roads Program</i></p> <p>The concept of “complete streets” guides communities to make decisions that make it possible and safer for people of all abilities and modes to move about in the public right of way. This workshop will review planning and zoning documents, examples of rural roadway geometry including road shoulders, crosswalks, local trails, and elements of design pertaining to compliance with ADA (Americans with Disabilities Act) that result in safer, healthier communities.</p>	<p style="text-align: center;">Revising Zoning Regulations <i>NYSDOS Staff</i></p> <p>This course asks when it is appropriate to update a municipality’s zoning regulations, and what you should be looking at when you review it; the importance of the comprehensive plan; and procedures for the amendment of zoning laws and ordinances, including referral to the county planning board, public hearings, and filing requirements.</p>
Noon	Lunch		
1:00 p.m.	<p style="text-align: center;">Subdivision Review <i>NYSDOS Staff</i></p> <p>C An overview of the statutory authority for municipalities to review subdivisions. Discussion will focus on the elements of a subdivision plat – layout of lots and infrastructure – along with concepts such as deep lot development and clustering. Review procedures are also addressed, including State Environmental Quality Review Act (SEQR), county referral, public hearings, decision making, and the possibility of default approvals.</p>	<p style="text-align: center;">The Reality of Comprehensive Planning <i>Rob Holzman, Saratoga Assoc. & Dana Crisino, City of Utica</i></p> <p>Comprehensive planning is an attempt to establish guidelines for the future growth of a community through an inclusive community-wide participation effort. Included will be discussions of the pitfalls and the positives that commonly occur when working through the process. A comprehensive plan is the official document that is adopted into local law by a local government at the end of this process. Case studies and anecdotal information will be provided as a narrative.</p>	
3:00 p.m.			